

# VOYAGEURS LUTHERAN MINISTRY

2023



ANNUAL REPORT

# BOARD MEMBERS

**Megan Moroff**  
*President*  
Trinity, Long Lake

**Bridget Sundell**  
*Vice President for Financial Development*  
Ledgerock Community Church, Ely

**Doug Ritcher**  
*Treasurer*  
Roseville Lutheran, Roseville

**Deacon Stephanie Anderson**  
*Secretary*  
St. Andrew's, Mahtomedi

**Davin Tingquist**  
Zion, Grand Rapids

**Aaron Burnside**  
St. Andrew's, Grand Rapids

**Hugh Etter**  
Faith United, Iron

**Mark Pass**  
Gloria Dei, Duluth

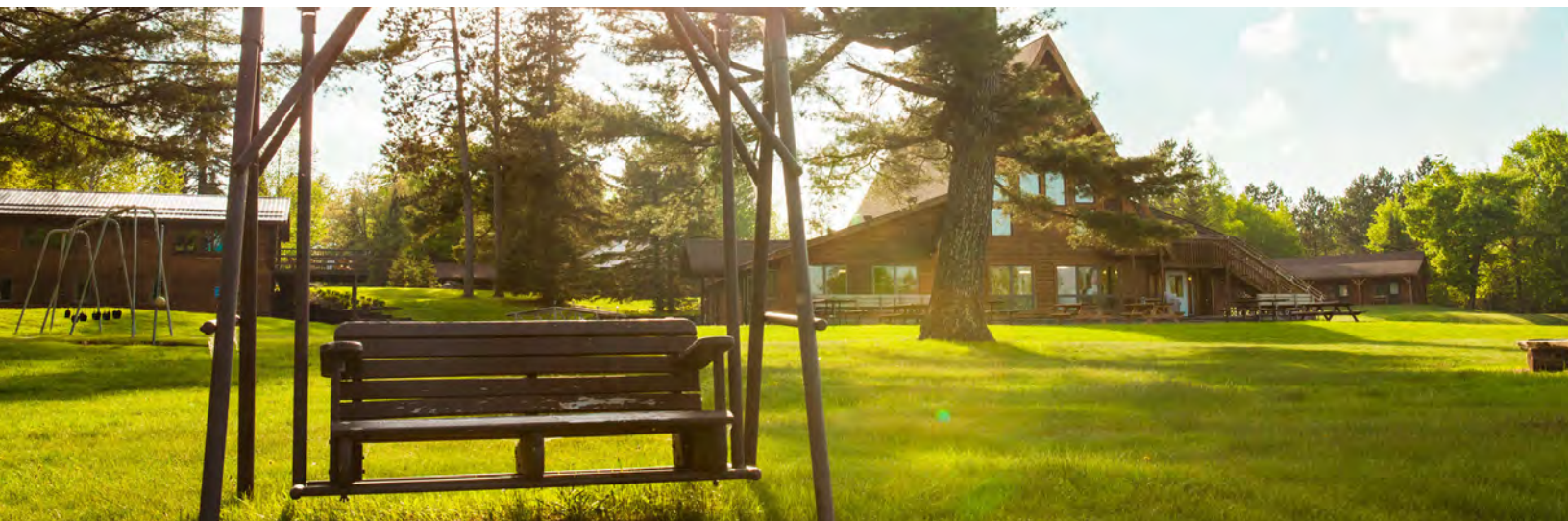
**Patrick Decker-Tonnesen**  
Salem, St. Cloud

**Kristin Kleinfelter**  
Zion, Grand Rapids

# YEAR ROUND STAFF

**Evan Moilan**, Interim Executive Director  
**Katie Maurer**, Director of Programs  
**Bjorn Anderson**, Camp Vermilion Director  
**Jamie Szamatula**, Office Director  
**Tom Hed**, Camp Vermilion Head Cook  
**Jan Greniger**, Camp Hiawatha Head Cook

**Bobbi Bush**, Camp Vermilion Housekeeping  
**Janet Hakala**, Bookkeeper  
**Andy Patterson**, Camp Hiawatha Property Manager





# INTERIM EXECUTIVE REPORT

**Evan Moilan**

It is a pleasure to greet you as the interim executive director for Voyageurs Lutheran Ministry! It's a privilege to join the work of providing opportunities for Christ-centered spiritual growth, leadership development, and outreach in God's great Northwoods.

I pause first to say thank you to Joel Abenth who faithfully served VLM for more than 16 years. Joel's work will have an impact at VOM for generations to come, and I know I join all of you in extending my heartfelt gratitude on behalf of this ministry for his commitment to VLM's mission and to the children and families of this region.

As with any organization, a time of leadership change is a time for reflection. A time to look upon the organization and consider how God might be calling us into the work of the future. A time to assess operations and ensure best practice. A time to consider what the impact of the strengths of previous leadership and consider what strengths are needed for the future.

My work as the interim executive director began on November 15th, 2023. But my connection to VLM has a longer history. Formally, I consulted the ministry on the Clear Paths, Bold Futures debt reduction campaign and celebrate that with the generosity of many VLM has burned its mortgage!

Informally, I have known VLM from a distance as a fellow executive with over 27 years of leadership for ELCA ministries across the country.

The months ahead will have both challenges and celebrations. I thank you in advance for your support and for your grace when I inevitably miss something along the way.

We commit to keeping you informed of the transition along the way. If there is anything I can do for you please don't hesitate to reach out.

# 2023 VLM BY THE NUMBERS

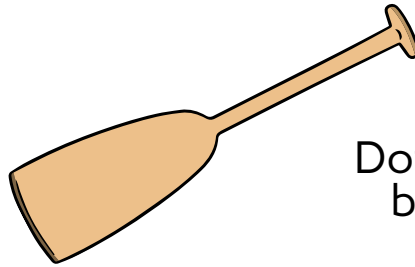
check out some fun statistics throughout the 2023 year!

## OVER 525

Caramel Rolls were consumed at Camp Hiawath this summer



## 318



Donors contributed at the builder level or beyond

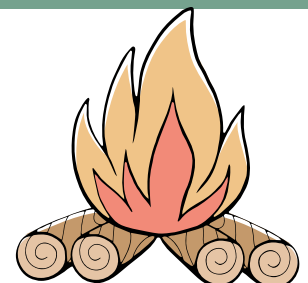
## Full time and part time seasonal staff

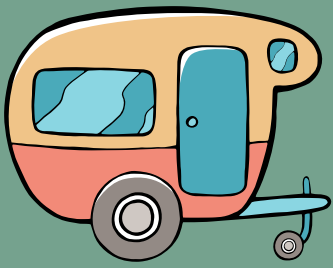


## 58

## 517

campers were welcomed around the campfires of VLM





**3,578**

Retreat and day  
use guests visited  
our sites

over

**180**



First Time  
Campers

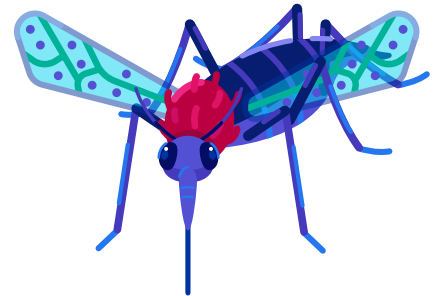


**300 +**

Pizzas were made at Camp  
Vermilion from June-September

**THOUSANDS**

of itchy mosquito bites



**100+HOURS**



of lawn mowing  
was done at  
Camp Hiawatha  
by some  
awesome  
volunteers



VCC groups came from

**5**  
States

# PRESIDENT'S REPORT

**Megan Moroff**

Greetings to our beautiful and beloved camp community!

As I write my third and final President's Report for you and reflect on our past year of ministry together, I can't help but think of everything VLM has worked through during my time as Board Chair – staffing changes, sizeable debt, a global pandemic – obstacles that made many organizations we love close their doors. But because of the ways you've shown up and supported VLM, we continue to provide life changing + faith forming experiences for all in God's great northwoods. This will be the first of many "thank yous" I share as we look back on 2023.

If you're a summer staff alumni, you may have practiced "Roses and Thorns," a nighttime ritual where campers share their highs and lows from the day. As I review the highs and lows of the past year for VLM, I'm happy to report that we had an entire garden of roses. Our summer staff were truly wonderful and blessed our campers abundantly. Likewise, our campers were a gift and blessed us just as much as we blessed them! Our year round staff and Board of Directors worked hard and made us so proud, and our community – member churches, volunteers, alumni, and friends of VLM – showed up in generous ways to support us. At our 2021 Annual Meeting, I stood before you all and said, "I don't know if I'll be your President when VLM eliminates our 1.5 million debt, but I'm going to be the President that gets the ball rolling." One of my biggest roses of the year is that I get to stand up at your 2023 Annual Meeting and say, "You did it. YOU eliminated our debt." To everyone who contributed to our Clear Paths campaign, thank you – you helped us overcome a huge financial obstacle and we're deeply grateful for you. To those who couldn't contribute financially but showed up in other ways this year, we see you and give thanks for you.

*(The full President's Report can be found on pg. 9-10 of the Delegate Packet)*





# BELOVED

VOYAGEURS LUTHERAN MINISTRY



# PROGRAM REPORT

**Katie Maurer**

Beloved, let us love one another, because love is from God; everyone who loves is born of God and knows God. Whoever does not love does not know God, for God is love.

1 John 4: 7-8 (VLM Summer 2023 Theme Verse)

Last year we asked youth directors, parents, summer staff and campers what they believed young people needed to hear most in the world today. Overwhelmingly, we received responses that people need to be reminded they are valued and loved for exactly who they are. This led to our focus theme “Beloved” in 2023. In exploration of this theme, campers learned about God’s loving creation of the world, examined God’s role in their lives, explored their call to share God’s love with others, grappled with the concept of unconditional love and grace, and wondered together about the way God’s love is active today. Exploring this theme over the summer were 517 campers between our two sites, 121 canoe country trip participants, and around 85 youth served in our community day camp pilot program.

We were able to offer our traditional K-12 day and overnight on-site programming at both camps, along with the 41st season of hockey camp, another year of canoe camp, a full-week of type-1 diabetes connection family camp, our full and half week traditional family camps, rendezvous camp for adults with developmental disabilities, and a restructured multi-week leadership development program for high school students, Leaders in Training (LIT).

*(The full Program Report can be found on pg.11 of the Delegate Packet)*





**2023 Annual Meeting**  
February 10<sup>th</sup>, 2024  
Messiah Lutheran Church, Mt. Iron  
**Delegate Packet**



800-331-5148 ☎ 218-481-9080

[vlm@VLMcamps.org](mailto:vlm@VLMcamps.org) ☎ [www.VLMcamps.org](http://www.VLMcamps.org) ☎ [www.NorthwoodsRetreatsMN.com](http://www.NorthwoodsRetreatsMN.com)

---

**Voyageurs Lutheran Ministry provides opportunities for Christ centered spiritual growth, leadership development, and outreach in God's great Northwoods!**

**Table of Contents:**

Camp Rouser	Pg. 2
Meeting Agenda	Pg. 3
2022 Meeting Minutes	Pg. 4-8
2023 Reports:	
President	Pg. 9-10
Executive	Pg. 10
Program	Pg. 11
Hiawatha	Pg. 12
Vermilion	Pg. 13
2023 Sound of the Northwoods	Pg. 13-14
Governance	Pg. 14
Board Nominee Bios	Pg. 15-16
Endowment Report	Pg. 17
2022 Financials/2023 Budget	Pg. 17-21
Budget Trends Chart	Pg. 22
Conservation Easement	Pg. 23-44

## **Camp Rouser**

We come from Hiawatha/Vermilion, our camp is the best camp,

Our staff is efficient and really quite nice.

We fight fast and furious, All insects injurious,

Tonight the mosquitoes will sure meet their fate!

(Chorus)

Um yay a, um ya ya, um ya ya, um ya ya

Um yay a, um ya ya, um ya ya ya! (Repeat)

We go on our hikes, we don't take our bikes,

We see all the sights and scratch all out bites.

The trees are so tall and we are so small

But that isn't all, we're having a ball!

(Chorus)

We don't have a pool, but we are no fools,

We have a lake and it is quite cool.

And we are so tough that it isn't rough

To swim to the raft and show all our stuff!

(Chorus)

We all go canoeing, and we are not fooling,

We paddle and portage all day and all night.

It may rain, it may pour and (name) may snore,

But all we can shout is more, more, more, more!

(Chorus)

## 2023 Annual Meeting Draft Agenda

**February 11<sup>th</sup>, 2024**

**Messiah Lutheran Church, 8590 Enterprise Dr South, Mountain Iron, MN 55768**

<b>9:30 a.m.</b>	<b>Staff Arrive and set up registration</b>	
<b>10:30 a.m.</b>	<b>Arrival and Coffee</b>	
<b>10:50 am</b>	<b>Camp Rouser and Cheer</b>	<b>VLM Community</b>
	<b>Greeting and Opening Prayer</b>	<b>Pastor Laura Mills Anderson</b>
<b>11:00 am</b>	<b>Call to Order and Consent Agenda Approval</b>	<b>Megan Moroff, President</b>
	<b>Approval of 2023 Meeting Agenda</b>	
	<b>Approval of 2022 Annual Meeting Minutes</b>	
	<b>Receipt of 2023 Treasurer's Report</b>	
	<b>President's Report</b>	<b>Megan Moroff, President</b>
	<b>Financial Power Point</b>	<b>Doug Richter, Treasurer</b>
	<b>Executive Update</b>	<b>Evan Moilan, Interim Executive Dir.</b>
	<b>Program Update</b>	<b>Katie Maurer, Dir. of Program</b>
	<b>Hiawatha Site Update</b>	<b>Katie Maurer, Dir. of Program</b>
	<b>Vermilion Site Update</b>	<b>Bjorn Anderson, CV Camp Dir.</b>
	<b>New Business</b>	
	<b>Presentation of 2023 Budget</b>	<b>Evan Moilan, Executive Dir.</b>
	<b>Conservation Easement Proposal</b>	<b>Evan Moilan, Executive Dir.</b>
	<b>Board Member Election</b>	<b>Megan Moroff, President</b>
	<b>Recognitions and Announcements</b>	<b>Bridget Sundell, Vice Pres.</b>
	<b>Looking Forward to 2024!</b>	<b>Katie Maurer and Evan Moilan</b>
	<b>Adjournment</b>	<b>Megan Moroff, President</b>

Please visit [www.VLMcamps.org/annual-meeting](http://www.VLMcamps.org/annual-meeting) for links to all Annual Report documents.

Questions and RSVPs please contact Jamie Szamatula at the VLM main office:

**(800)331-5148**

**(218) 481-9080**

**vlm@VLMcamps.org**

**1325 N 45<sup>th</sup> Ave East, Duluth, MN 55804**

## 2022 Annual Meeting Minutes

February 11th, 2023

### Camp Rouser/Cheer–Camp Staff

#### 11:10 Greeting and Opening Prayer–Pastor Kevin Olson, Our Savior’s Lutheran Church Hibbing

- Proverbs Chapter 2 starting with the 6th verse
- Camp provides practical and leadership skills for young adults in any profession

#### 11:20 Call to Order and Consent Agenda Approval–Megan Moroff, President

- Megan Moroff 2022 board president, thank you for being here in person and online
- Annual meeting is crucial to our ministry
- Thank you to Our Savior’s Hibbing for hosting us
- 11:21 am waiting for consent of agenda until one additional delegate shows up, making quorum

#### 11: 22 President’s Report–Megan Moroff

- Please find report on page 7
- Report Highlights:
  - 2022 was an incredible year. One year ago we had lots of staff transitions, and have hired incredible staff since.
  - Trisha Peterson celebrated her one year as Camp Hiawatha Director. In March 2022 hired Katie Maurer, Program Director and Bjorn Anderson, Camp Vermilion Director.
  - Big thank you to the staff who continued to lead during VLM staff transitions: Jamie Szamatula, Tyler Vork and Joel Abenth.
  - Huge thank you to VLM volunteers for making the ministry happen!
- **Challenges of 2022:**
  - COVID challenges: we canceled a week of camp this past summer after a small COVID outbreak. This resulted in 96 campers unable to attend that week. Some of those campers attended later weeks, but not all.
  - Lower camper numbers than anticipated last year. We are working hard to get numbers back up in 2023. This is work for delegates too.
  - While camper numbers were lower, we had the best retreat season in VLM’s history this past year!
  - VLM board stepped up to help in the midst of transition. The VLM board members came to Bluegrass Festival, other annual events, board retreats, and part of staff training.
  - Introduction of board members.
- Debt Update:
  - Last year at the annual meeting we had lots of questions about the staff transition and debt.
  - In 2019 the VLM board committed to eliminating 1.5 million in debt by July of 2023. We partnered with GSB Fundraising for a silent campaign: Clear Path’s Bold Futures.
  - In July 2022 we started having small gatherings to start sharing stories and talking about the debt. From July to November we received one million dollars in cash and pledges to relieve our debt.
  - Early gifts allowed us to reduce our monthly payments on our debt to \$5,200, giving us \$3,000 a month to allocate back to other areas of our ministry.
  - Board is committed to fully relieving the debt by July of 2023. Any questions or interest in hosting gatherings to help in the debt reduction, please talk to Joel.
  - Thank you to all who have worked on Clear Paths and everyone who has donated to our debt relief efforts.
  - Credit to Joel Abenth, Executive Director, for all his efforts in fundraising this past year.

#### 11:34am Financial Report–Doug Richter, Treasurer

- Thank you! Traveled from the Twin Cities.
- Three big areas of operations
  - Operational Activity: revenue directly related to running programs or fundraising (excluding 2022 Debt Relief Campaign)
  - Campaign Activity: all revenue related to debt relief
  - Other Income/Expenses: special projects, insurance reimbursements, PPP loan, construction in progress assets that will be capitalized.
- Total net income \$855,000 for the year
- Covid impacted income, as well where people are spending their time

- \$130,000 short of where we wanted to be versus budget
- Total current assets at year end is \$185,449 versus \$58,658 last year
  - Proceeds from insurance
  - Prime note payable that impacted assets
- Reduction of liabilities with debt reduction gives us what we need in a net-asset standpoint.
- Total liabilities under one million. Net assets up a little over \$700,000.
- We have more financial flexibility moving into 2023.
- Summer program income was down which impacted our overall income versus budgeted expenses. Retreat and program income were up and assisted in making up for some of the lower numbers from the summer program.
- Next year is looking more promising for camper numbers.
- Our expenses ended \$70,000 favorably at year's end, even though we were down what we had budgeted.
- We had turnover of staff, inflation impacted budget for premiums, and we invested in continuing education for our staff. All impacted our budget and year-end numbers.
- Headcount reductions in summer staff impacted the budget.
- End of December total campaign net revenue \$838,233 after expenses for the campaign are deducted.
- Question from Karolyn Torgerson - what does PY stand for? Answer: "Prior Year".
- Ratios/Metrics:
  - VLM Board monitored ratios month to month
  - Ratios monitored included:
    - current ratio: assets versus liabilities
    - return on assets (ROA): net income versus average total assets
    - Debt ratio: debt divided by total assets
    - Defensive Interval Ratio: End of year current liquid assets versus daily cash expenditures.
- Operations this year, our balance sheet has gotten stronger over the last two years.

*11:36 final delegate showed up! We have quorum!*

### **Consent Agenda and 2021 Meeting Minutes Approval**

Motion: Carl Sandess, Gloria Dei Duluth

Second: Dave Tool Faith United Iron

### **Further Discussion before voting:**

Question on 2021 meeting minutes from Bruce Garbisch Trinity in Cook:

- Page 5 on 2021 minutes: change "only voting on thighs" to "only voting on things"
- Page 6: Board Member Election. States 3 candidates, only 2 approved candidates.
- Jamie Szamataula comment: we had three candidates; after the 2021 packet was printed Amanda withdrew her name.
- Changes will be made to reflect those voted onto board last year.
- Tucker Nelson, Our Savior's Virginia noted the city of Aitkin misspelled in 2021. This will be corrected.

11:55 Vote on Agenda and Minute Approval: motion approved

Megan Moroff: Thank you to Janet Hakala, bookkeeper for getting us through the past year.

### **11:56am Executive Update—Joel Abenth**

- Thank you for coming. Attention directed to a map projected on the screen. The map was put together by Mel Bakk and details a 1973 north canoe trip from Canal Park Duluth to Grand Portage, then through the Boundary Waters to Camp Vermilion. Challenge to today's guides to redo this trip.
- VLM moved into a new office at Lutheran Church of the Good Shepherd Duluth, due to synod selling old office building.
- Map (noted above) represents a pendulum of a trip, and this past year was a pendulum of a year. We had 431 campers this last year, our lowest number ever. We had to cancel a week of camp for COVID. At the same time of our total congregations 56/80 supported VLM financially, 63/80 sent campers to camp, and 6/80 member churches used VLM for retreats. All of this was part of our challenge, and also provides us future opportunities. Trisha and Bjorn have clipboards with every opening at both sites for this year 2023, with opportunities for churches to book retreats.
- The other side of our pendulum is that our retreat income was \$146,000. This means a lot of people experienced camp that otherwise would not have, outside of our member congregations.

- A big piece of the last year is that we hired amazing staff. Shoutout to Julia Gwash, summer staff member from 2022 and for 2023 who has helped us recruit and is helping today.
- Thank you to the year round staff for all the work. Thank you Tyler for juggling a lot at both camps to support property. Thank you to Janet for keeping our books accurate.
- A year ago we shifted to a one Program Director model, and our two Camp Directors. Camp Directors are vital to provide on-the-ground leadership at camps and connections in communities. Shoutout to Bjorn and Trisha for making this happen. We have also had lots of transitions of cooks and maintenance staff, which have posed challenges for Camp Directors.
- As we started one Program Director model we worked with Lutheran Outdoor Ministries to conduct a consult; the consult encouraged VLM to get Joel out of the day to day operations. Katie has stepped into this role supporting daily operations of camp.
- VLM Board of Directors recognition from Joel. WOW. From training, to governance, to education, this board has great leadership. Thank you!
- Joel has never been more excited and confident for the future of VLM and Camp Vermilion/Camp Hiawatha. He is challenged by our present, yet excited for the future.

#### **12:07 Program Update—Katie Maurer**

- Thank you staff!
- 2022 Theme was Radical God, focused on God’s Radical hospitality, love, grace, creation, and promise for each of us.
- We were able to offer traditional K-12 programming as well as specialty camps: Hockey, Canoe, Type One diabetes Connections, Rendezvous, and Family camp.
- Recruiting staff for 2023, especially male counselors, Community Day Camp Coordinator, and Canoe Country BWCAW guides.

#### **12: 13pm Hiawatha Update—Trisha Peterson**

- Trisha has spent a year as of November at Camp Hiawatha.
- Thank you to the volunteers. We lost a major volunteer, Dan Greer, this year. The Hiawatha volunteers are a team. They are loved. They have helped us get through the year.
- We currently do not have cook or maintenance at Hiawatha.
- Specialty Camp’s at Hiawatha: T1D transition to full week. Trisha is reaching out to area hockey associations for hockey camp to invite more campers/players
- See report on page 11.
- Lindberg Dorm was redone last year due to a broken pipe. We have a small issue with a pipe right now, but we are working to fix it and finish Lindberg fully soon.
- This is not documented, but Trisha has seen over 100 new people in the local area experience camp for the first time in the last year.
- We already have 40 new people who have come for retreats this year!
- Check out “It All Started with a Door” video with Jim Wilford, detailing work at Hiawatha over the years. There is also a Thrivent North video featuring Trisha, Camp Hiawatha and the northwoods area.
- Reminder: there are openings at camp! Book today.

#### **12:21pm Vermilion Update—Bjorn Anderson**

- Striving for robust content with brevity!
- Thank you to everyone, year round staff, Julia.
- Recognition to Tyler for the fantastic work he does. Camp Vermilion has never looked better! Recognition to Bobbi for her hard work housekeeping at Vermilion.
- Shoutout to our Vermilion volunteer base
- In the last year we have made improvements in our staff shower house, revitalization of our outhouses, new benches for campfires, stripping and revitalization of Wakemup Lodge (thanks to Paul Ronning), handicap railings put in in the bathrooms of our new dining hall, and completion of a new sauna at Camp Vermilion.
- Excited about increasing the focus of year round adventure programming at Vermilion. Building up the canoe country program sending groups into the BWCAW. We have started purchasing kevlar canoes for BWCAW. We are working on acquiring snowshoes and skis for winter. Just yesterday Bjorn met with someone regarding dog sledding to hopefully have dog sledding at camp.
- Looking for summer staff, guides, and food service.
- We have retreats open at both sites! We would love to see member congregations taking advantage of this to get on site.

## 12:26pm New Business—Megan Moroff, President

- Proposed By-Law Changes
  - Please refer to the copy of your by-laws in front of you. Documents are also on the website.
  - Change in vice chair name, change in allowance of at large members, change in main endowment, Mary Bar and Julie and Patti Campership Fund and distribution policy.

Live motion on the floor, Moved and Seconded by Board and Endowment Team

Motion passes. 12:29pm

## 2023 Proposed Budget—Joel Abenth, Executive Director

### Income:

- Refer to pages 18-19
- Budget this year includes the last four years of the budget for comparison, since the last few years have been unusual.
- From income side best year of PCMs was 2020. We get that churches may be having financial challenges as well.
- Looking at builders we are below what we budgeted. Founding families (those who give in excess of \$10,000 annually) make up a quarter of our budget. We reduced the number from founding families for our 2023 budget after conversations with those families.
- Increase for total builders in 2023 reflects closer to where we were in 2021. In 2022 some people who normally give as builders gave toward debt relief instead.
- We increased fundraising goal for our annual music festival.
- Our hope is to increase our summer worship income in 2023.
- Grants and memorials continue to be an important part of our budget.
- Honorariums and memorials are difficult to project.
- Our budget reflects our past year numbers in terms of summer campers. We budgeted assuming 450 campers, but our goal is 700 campers. Anything on top of our 450 campers will be extra income for our budget after expenses associated with more campers.
- Congregational ministry income for 2023 is \$0 for congregational day camp.
- Budgeted for 20 canoe trips, and have all 20 booked for this year.
- Retreat income was increased to \$200,000. This is a response to LOM consult previously mentioned, and our success of 2022. Retreats is the area of our budget we are most looking to increase and stretch for 2023. One retreat per month at each site, in addition to what we had in 2022, will get us the extra \$50,000 we are budgeting for in 2023.

### Revenue Income Questions:

- John Rudberg, Our Savior's Hibbing: Is there any thought about making online revenue from canteen?  
Answer: Yes- we have started conversation and looking at options. We want to make sure we have the people in place to handle the inventory and money to make this function well.

### Budget Expenses:

- Board supported salary increases for 2023.
- Retreat hosts/cooks were moved to year round payroll line on our budget.
- We reduced the cost of our rent in our office move.
- We are budgeting for the full reduction of debt by July of 2023.
- Summer Community is also receiving raises. We are trying to get rid of the misnomer that you don't make money at camp. We are working hard to take care of our staff.
- Summer food costs will be dependent on cost of individual food items, as well as who we have in place for cooking leadership at both sites.
- We are planning to staff and create programs based on 700 campers versus the 450 we budget income for.
- We are trying to limit VLM vehicles that require a lot of maintenance, and are budgeting to be able to purchase newer, more reliable vehicles.

12:45pm Budget motion on the floor, moved and seconded by Board of Directors

Motion passes unanimously.

## 12:46pm Voting in New Board Members

- Doug Richter and Hugh Etter up for re-election
- Kristen Klinefelter is a new board nominee

Motion to approve board members

Motion by: Carl Sandness Gloria Dei Duluth

Second by: Amie Abenth, Lutheran Church of the Good Shepherd Duluth

Motion passes.

#### **Thrivent Update–Jeff Hakala**

- Both Thrivent and VLM are organizations of Christian folks.
- Two of Thrivents generosity programs are thrivent choice and thrivent action teams
- Thrivent Choice: member dollars that can be directed to a nonprofit of persons choice (i.e. camp, church, or other non profit). A little over \$9,000 thrivent choice dollars came to VLM. This is a great resource that many members don't know about! If members of Thrivent do not designate thrivent choice they money is redirected nationally. You are encouraged to keep the money local! Deadline is March of every year.
- Thrivent Action Teams: This is an active generosity program that provides seed money of \$250 to help our communities. These can be used for camp for things such as work day, special projects, etc. This is another great resource folks don't know about! This is not a lot of work. You don't even need receipts; Thrivent trusts you to do the good work. Let folks know!
- Jeff is financial advisor through Thrivent. His goal is to help guide people to financial security to surplus to generosity.

#### **12:55pm Recognitions and Announcements–Bridget Sundell, Vice President**

- Introduction: Bridget has been on board for two years now.
- Recognition to Pastor Erika Foss for serving on the board.
- We are accepting two additional board members. We have 10 and can have up to 12 serving.
- Upcoming events: Music Festival, Mother's Day Brunch, Work Days and overnights. Looking forward to 2023–Katie Maurer and Joel Abenth
- Bluegrass Festival is changing to all music, and the name is Sounds of the Northwoods: A fundraiser and festival for camp.
- 2022 Bluegrass was down in numbers of people attending and in giving.
- A call is going out to all congregations to donate church baskets for the festival.
- Raffle tickets for Sounds of the Northwoods are \$10 1st prize a fancy boat, 2nd place is Frost River adventure packs and 3rd place is \$500.

#### **Katie**

- Our summer 2023 theme is Beloved 1st John 4:7-8
- Early, early bird registration is coming up this week and regular early bird is in April
- Change in hiring. CV and CH are unique. CH is focused more on specialty camps and first time camp experiences. CV is focus on programming for adventure and getting everyone in a canoe. Staff are being hired with a specific site in mind to build on the uniqueness of sites and staff gifts.
- Community Day Camp - pilot program in 2023. Community day camps are to bridge the gap between camp, community and congregations. They are open to the public, not just the members of the church. Four congregations have been contacted to serve as host sites. More information will be coming soon.
- We started exploring young adult ministry in 2022 and will continue in 2023. We have partnered with ELCA, NEMN Synod and local campus ministries in the beginning stages of "Gather:Twin Ports", a young adult ministry for those 18-35.

#### **Joel-2023 Looking Forward:**

- Check our website for updates and changes moving forward in 2023.
- Youth under 18 are invited to make a drawing and submit to VLM by February 20th to be the next camp ad. The top ad will run in Grand Rapids Herald review and get a \$20 gift card to canteen. Second place will get \$10 gift card and be lifted up on social platforms. All submissions will get \$5 in canteen.

#### **Closing, Grace, Adjournment–Megan Moroff, President**

- BWCAW Grace
- Motion To Adjourn: Carl Sandness Gloria Dei Duluth
- Second: Tom Martin 1st Aitkin
- Motion passed.



## President's Report

Greetings to our beautiful and beloved camp community!

As I write my third and final *President's Report* for you and reflect on our past year of ministry together, I can't help but think of everything VLM has worked through during my time as Board Chair -- staffing changes, sizeable debt, a global pandemic -- obstacles that made many organizations we love close their doors. But because of the ways you've shown up and supported VLM, we continue to provide life changing + faith forming experiences for all in God's great northwoods. This will be the first of many "thank yous" I share as we look back on 2023.

If you're a summer staff alumni, you may have practiced "Roses and Thorns," a nighttime ritual where campers share their highs and lows from the day. As I review the highs and lows of the past year for VLM, I'm happy to report that we had an entire garden of roses. Our summer staff were truly wonderful and blessed our campers abundantly. Likewise, our campers were a gift and blessed us just as much as we blessed them! Our year round staff and Board of Directors worked hard and made us so proud, and our community -- member churches, volunteers, alumni, and friends of VLM -- showed up in generous ways to support us. At our 2021 Annual Meeting, I stood before you all and said, "I don't know if I'll be your President when VLM eliminates our 1.5 million debt, but I'm going to be the President that gets the ball rolling." One of my biggest roses of the year is that I get to stand up at your 2023 Annual Meeting and say, "You did it. YOU eliminated our debt." To everyone who contributed to our Clear Paths campaign, thank you -- you helped us overcome a huge financial obstacle and we're deeply grateful for you. To those who couldn't contribute financially but showed up in other ways this year, we see you and give thanks for you.

Along with the highs there will always be lows. This year we said goodbye to our Camp Hiawatha Director, Trisha Peterson, and give God thanks and praise for the 2 years she served in this role. We also said farewell to our Executive Director, Joel Abenth. Joel served VLM for 16 years and that alone deserves a round of applause! Even if you love camp, working for camp year-round is not easy. Anyone who knows Joel knows that he bled VLM, and we will certainly miss the gifts and leadership he brought to our organization. May blessings abound for Joel and his family (who also contributed so much to our ministry -- thank you Amie, Ella, and Isaac!) as they transition into what God has planned next for them.

If we're going to share roses and thorns, let's also talk about buds -- the things we have to look forward to. Having an open Executive Director position for the first time in 16 years is a big transition for us, but God sent us an incredible interim: Evan Moilan. I had the pleasure of meeting Evan two years ago when we hired him as a consultant to help us eliminate our debt and he smashed it out of the park. Turns out Evan isn't just an incredible fundraising consultant -- he's also served as an Interim Executive Director at multiple Lutheran camps across the nation. We're thrilled to have him join us for this short yet critical time and feel blessed to have him on our team!

Even though we're in no hurry to see Evan go, we're finalizing the Hiring Committee for our next Executive Director and will begin the search process in the next few weeks. Please keep the leadership of VLM in your prayers as we search for the person God is calling to serve in this important role.

Buds abound for Voyageurs Lutheran Ministry. We're excited for the new gifts and talents our future Executive will bring to our organization. Our year round staff are some of the best staff you will find in Lutheran Outdoor Ministries. We have a truly impressive Board of Directors (am I biased? Probably! But I'm also right). And eliminating our debt has opened up so many possibilities for our ministry to flourish.

Flourishing in 2024 will require some action, my friends. As I prepare for my own transition after serving as your Board Chair for 3 years, and as a Board Member for 6, I've been asking myself, "How do I want to engage with VLM when I'm no longer on the Board?" I want to invite you to ask yourself the same question. How do you want to engage with VLM in 2024? Do you want to rent the Jacobson Retreat Center at Camp Hiawatha for a weekend with your friends? (I did this last Fall and 10/10 recommend). Do you want to up your giving to help ease the stress that inevitably comes with transition? Do you want to start having more Alumni gatherings in the Twin Cities? (a group of us gathered at Broken Clock Brewing in July and once again, I recommend). Let's get creative about the ways we connect with VLM because one of the many things I learned while on the Board is that Voyageurs Lutheran Ministry is so much more than a summer camp -- we are a

year round facility that has abundant opportunities for folks of all ages to grow in faith and connect in community. If you have dreams about what our community can look like in 2024, I want to hear them! You'll find my email below.

In closing, thank you for the opportunity to serve as your Board President. It's been a surprisingly life-giving experience, even though it involved incredibly stressful situations like Covid and debt. I've been honored that you trusted me in this role during such challenging times, and I'm truly humbled to have been a leader of the organization that taught me how to lead. God is working in, with, and through Voyageurs Lutheran Ministries, and I can't wait to see what's in store for us in 2024.

Blessings as you continue to bless VLM, and I hope to see you in God's great northwoods soon!

Megan Moroff

VLM Board Chair 2023

[mmoroff001@luthersem.edu](mailto:mmoroff001@luthersem.edu)

## **Executive Report**

February 10<sup>th</sup>, 2024

It is a pleasure to greet you as the interim executive director for Voyageurs Lutheran Ministry! It's a privilege to join the work of providing *opportunities for Christ-centered spiritual growth, leadership development, and outreach in God's great Northwoods.*

I pause first to say thank you to Joel Abenth who faithfully served VLM for more than 16 years. Joel's work will have an impact at VOM for generations to come, and I know I join all of you in extending my heartfelt gratitude on behalf of this ministry for his commitment to VLM's mission and to the children and families of this region.

As with any organization, a time of leadership change is a time for reflection. A time to look upon the organization and consider how God might be calling us into the work of the future. A time to assess operations and ensure best practice. A time to consider what the impact of the strengths of previous leadership and consider what strengths are needed for the future.

My work as the interim executive director began on November 15<sup>th</sup>, 2023. But my connection to VLM has a longer history. Formally, I consulted the ministry on the Clear Paths, Bold Futures debt reduction campaign and celebrate that with the generosity of many VLM has burned its mortgage!

Informally, I have known VLM from a distance as a fellow executive with over 27 years of leadership for ELCA ministries across the country.

The months ahead will have both challenges and celebrations. I thank you in advance for your support and for your grace when I inevitably miss something along the way.

We commit to keeping you informed of the transition along the way. If there is anything I can do for you please don't hesitate to reach out.

Kind Regards,

Evan Moilan

[Executivedirector@VLMcamps.org](mailto:Executivedirector@VLMcamps.org)

979-702-0406

## Program Report

*Beloved, let us love one another, because love is from God; everyone who loves is born of God and knows God. Whoever does not love does not know God, for God is love.  
1 John 4: 7-8 (VLM Summer 2023 Theme Verse)*

Last year we asked youth directors, parents, summer staff and campers what they believed young people needed to hear most in the world today. Overwhelmingly, we received responses that people need to be reminded they are valued and loved for exactly who they are. This led to our focus theme “Beloved” in 2023. In exploration of this theme, campers learned about God’s loving creation of the world, examined God’s role in their lives, explored their call to share God’s love with others, grappled with the concept of unconditional love and grace, and wondered together about the way God’s love is active today. Exploring this theme over the summer were 517 campers between our two sites, 121 canoe country trip participants, and around 85 youth served in our community day camp pilot program.

We were able to offer our traditional K-12 day and overnight on-site programming at both camps, along with the 41st season of hockey camp, another year of canoe camp, a full-week of type-1 diabetes connection family camp, our full and half week traditional family camps, rendezvous camp for adults with developmental disabilities, and a restructured multi-week leadership development program for high school students, Leaders in Training (LIT). 2023 also brought the opportunity to pilot a new model of our day camp programs, which had not been offered since 2018. “VLM Community Day Camp” provided an invitation not just to a specific congregation, but to the surrounding community of churches and neighbors, and a call for the community and adult leaders to invest in the lives of their youth, using the week of camp to lay the foundation for the faith-filled relationship-work to come. VLM brought programming of bible study/songs/crafts/games along with leader training, and the host community brought the energy, campers, adults, and creativity for their context. We learned a lot from our pilot program, and are grateful to our host congregations for working alongside us in this effort. While we are not able to offer day camp programming in 2024, we are excited to continue listening to the needs of the church and exploring how we may offer faith formation support to our communities in years to come.

In 2023 we also welcomed many retreat groups, weddings, and events to our sites. Our year round programming included an elementary winter youth rejuve at Camp Hiawatha, VLM quilting retreats at both sites, paddle building retreats at Camp Vermilion, another successful Mother’s Day Brunch at Camp Hiawatha, a “Sip and Sing” camp song event in Duluth, work days at both of our sites, the rebranded music festival “Sounds of the Northwoods” (SOTN), and our Celebration of Light and Music event at Camp Hiawatha. We are grateful for the ways we could share in our beloved camp community in 2023, and are eager to see God’s work unfold in both familiar and innovative ways in 2024! Please watch our emails, social media and website for ways you can be involved at camp!

A huge welcome to our new and newly returned year-round staff members: Andy Patterson, Tom Hed, Nicole Hed, Kevin Docken, Jan Greniger, Gary Greniger, Loulla Hamlin, Bradley Petzer, and Evan Moilan. Finally, thank you to our volunteers, campers, parents, staff, families, congregations, ministry partners, donors, and all who support this ministry. You are seen, heard, valued and so beloved.

In peace,

Katie Maurer, Director of Programs  
[programs@vlmcamps.org](mailto:programs@vlmcamps.org) 218-780-4116

## Hiawatha Site Report

When we are on the recruiting trail for summer staff or inviting campers and retreat guests into our spaces, we have the opportunity to highlight the uniqueness of our two sites. Camp Hiawatha is often described as open, accessible, family-friendly, with a huge community supporting and surrounding the camp. We highlight our large ballfield, sandy shores and clear water of Deer Lake in the summer, access to snowmobiling, snowshoeing and skiing in the winter, our iconic A-frame chapel, the historic log lodge, opportunities to tie dye, the best caramel rolls around, access to nature, and a vibrant worshipping community. While 2023 presented VLM and Camp Hiawatha specifically with the challenge of transition, the core identity of Camp Hiawatha and the opportunities for christ-centered spiritual growth, leadership development and outreach in God's Great Northwoods remain constant, and more needed than ever. What a gift this place is in our world!

As we reflect on the ministry of this past year, we are excited to share that Camp Hiawatha had the opportunity to host a wide variety of celebrations, events, gatherings and programs. Highlights include the annual Deer Lake Frolic, hosting the Itasca County Sheriff's Department and families, Grand Rapids High School Choirs spreading joyful music around our site, marriage celebrations (the log lodge has never looked more enchanting!), another successful Celebration of Light and Music where we were reminded that even in our "stumpiness" when we aren't feeling very jolly, God is present, and of course many, many family reunions, gatherings of friends, and our regular scheduled quilting and youth programming throughout the year. Thank you to all who chose Camp Hiawatha as a space for your community this; we look forward to welcoming you home next year, and creating opportunities for even more people to experience God's Great Northwoods in the year ahead

Over the summer months, we hosted seven weeks of programming, with many gatherings of families and friends on the weekends between program weeks. We celebrated our 41st year of Hockey Camp, and said thank you to a group of our coaches who have worked for many years developing this unique hockey program. Other program highlights included transitioning our new in 2022 Type-1 Diabetes Family Connection Camp from a weekend to a week-long program. It was such a joy to provide those extra days of renewal and connection to our campers! And of course, we had a blast exploring nature and faith with our many unique programs at Hiawatha, rooted in our theme for the summer: Beloved.

2023 also brought new models of staffing for our summer program team. We worked to train our summer staff as one ministry team across VLM, yet also had the opportunity to focus and build teams that were more site-specific. The Camp Hiawatha (and all) summer staff were incredible this past year! We cannot sing enough praises for their creativity, joy, and dedication. They truly are the heart of this ministry and bring so much light to the camp community.

Along with our seasonal staff, we give thanks for the time and talents of our many volunteers, without whom our camp would not look or feel the same. Finally, a recognition to the year round team members. Thank you to Andy Patterson, who has served in the Hiawatha Property Manager role since May and tackled projects including reroofing parts of Gloria Dei cabins and fixing our beloved sauna. Thank you to Jan Greniger and her kitchen team who tirelessly provide guests the highest level of food hospitality. Our ministry truly is that of a team. Thank you to all who are a part of it, in all the big and small ways!

On behalf of the Camp Hiawatha team,

Katie Maurer, Director of Programs  
[programs@vlmcamps.org](mailto:programs@vlmcamps.org) 218-780-4116

## Vermilion Site Report

2023 also saw increased summer staff and camper numbers when compared to 2021 and 2022. The summer community was vibrant and committed to providing a safe, fun-filled, faith-centered experience for all of our participants. The Canoe Country program also saw a notable increase in trip numbers compared to 2022 and was bolstered by a talented group of experienced guides and leadership staff. The Canoe Country program also obtained and refurbished a pair of kevlar canoes, the weight of which was greatly appreciated by campers and is enthusiastic about the donation of new tents for use in 2024.

Camp Vermilion event and retreat highlights included the elimination of debt on Voyageur Lodge and a burning of the mortgage for that building, SOTN Fest (a rebranding of the Bluegrass Festival fundraiser), spring work day, the return of the Vermilion Lake Association Annual Meeting to Voyageur Lodge, a large wedding, multiple quilting/crafting retreats, Narcotics Anonymous, and the Northern Lights Chamber Music Institute.

2023 was a year marked by transition for Camp Vermilion and Voyageurs Lutheran Ministry as a whole. In the spring of 2023 Camp Vermilion welcomed Tom Hed to its staff in a full time food service role. The camp is blessed by his skillset and presence as well as that of his wife, Nicole, and daughter, Lucy.

Camp Vermilion and VLM look forward to 2024 with hope and optimism for renewal and excitement to continue to live out our mission and vision with purpose for those who have been to our sites many times and those yet to come.

In closing, I would like to express my gratitude towards my coworkers across the organization, particularly Bobbi and Tom at Camp Vermilion, as well as enduring thanks to VLM's Board, volunteers, and supporters, without whom Camp would not be the same.

Blessings,

Bjørn Anderson, Camp Vermilion Director  
[bjorn@vlmcamps.org](mailto:bjorn@vlmcamps.org) 218-780-2696

## 2023 Sounds of the Northwoods Music Festival

The 1<sup>st</sup> Sound of the Northwoods Music festival was held in the field at Camp Vermilion in 2023. We welcomed a couple new bands, with some regular bands to expand our musical genres. Family fun was had all around whether listening to music, playing games, or partaking in the silent auction.

We saw attendance increase from last year's Bluegrass festival with moving activities such as the silent auction and basket challenge back to in person. Thank you to everyone that came to continue to support God's mission at Camp Hiawatha and Camp Vermilion.

A huge Thank You to the staff and volunteers who made this event a success, and an equally large thank you to everyone who donated items for our silent auction and church basket challenge. Special shout out to our planning committee volunteers, Rachell Anderson, Laura Mill Anderson, and Sara Thilmany (Bustrom) in helping coordinate the entire event.

Sundell Eye Associates  
Cook News Herald  
The Country Store  
Lefty's Tent Rental  
Short Stop /CB Warehouse

Frost River  
Rays Sport & Marine  
Homestead Mills  
Benders Shoes  
The Watering Can

Zups  
Locally Laid  
Bev's Bevs  
The Timberjay  
Johnson Wilson Construction  
Hoops Brewing  
Upper Lakes Foods  
Buffalo Wild Wings  
The Reif  
Karls Wheelhouse at Two Lugs and a Nut  
Vita Pizza  
Unwind up North  
Tru by Hilton, Duluth

Benders  
Ludlows Island on Lake Vermilion  
Broken Clock Brewing Co-Op  
One the Limit  
Rebecca Aitkin Pottery  
Sysco  
Boom Town Brewery Woodfire, Duluth  
Edgewater Hotel & Waterpark  
Spent Dandelion  
Duluth Whiskey Project  
Thrivent, Mission Creek Office  
Macrostie Art Center  
Arrowhead Concert Association

## **Governance Report**

Throughout 2023, board governance continued to focus on helping VLM towards prosperity and sustainability. As this committee has grown and evolved throughout the last 6 years now, we have grown to appreciate the benefits of having such a committee at VLM. I've witnessed improved accountability, mature decision-making, board recruitment aligning with the needs of VLM, board diversity, and risk management strategies.

Now, more than ever, our governance committee needs to continue to play an essential role in our organizational framework as we navigate new times, first with an interim director and hopefully soon with our new Executive Director. I believe we currently have a high performing board and as we move into 2024, we need to find ongoing leaders both on the board level and again, an Executive Director, who can support and facilitate ongoing growth at VLM.

In closing, I'd like to say that I am confident in the direction that VLM is going. If you have any desire to help and lead VLM, please feel free to reach out to me.

Sincerely,  
Mike Olson

## 2023 VLM Board Nominees

### **Board Nominee Bio: (member 2<sup>nd</sup> Term)**

**Aaron Burnside**

**Employer:** United Healthcare - Business Process Analyst

**Home Congregation:** Saint Andrews Lutheran Church, Grand Rapids, MN

**Please describe any other volunteer experience** **Please describe any other volunteer experience:** I have extensive history volunteering with Habitat for Humanity and with the Boys and Girls Club of the Northland.

**Please describe any fundraising experience:** I don't have a lot of experience asking for financial donations, but over the years as a Program Director I gained a lot of experience fundraising in-kind donations and getting volunteers to help at camp/with events.

**Please tell us about your family:** My wife Emily and I met at camp as summer staff and we were married at Camp Hiawatha 5 years later. Now, we live in Duluth with our almost two year old.

**Please tell us your hobbies:** I enjoy spending time outside, whether that's camping or hiking or just having a nice bonfire, it really is great to be alive outside in God's great northwoods.

**Why are you interested in serving as a board member:** I love VLM: the camps, the staff, the volunteers, the community. VLM has so much potential and I want to help more people see that. I want to offer my unique insights to help VLM during this time of transition. Since stepping down from my position as Program Director I have not lost my passion for camp. Though my career has led me in a different direction, I remain invested in the future of VLM and wish to help move the organization forward.

**How have you been active at VLM or other Outdoor Ministries in the past?** I was on summer staff for two years and was a program director at Camp Hiawatha for three years. I was a year-round intern at Lutherhaven Ministries in northern Idaho. I have spoken at many different churches and colleges on behalf of VLM. I have attended several LOM conferences.

### **Board Nominee Bio: (At Large)**

**Harold M. "Mike" Olson**

**Employer:** Bigfork Valley Hospital – Doctor of Chiropractic

**Home Congregation:** Marcell Community Church

**Please list your past and present memberships on boards, committees and organizations.**

VLM-	Board Member	2015 - 2021
	Governance Chair	2018 - Present
	Endowment Committee	2018 – Present
North Itasca Electric Co-Op	Election Committee	2020 – 2021
Bigfork Youth Baseball	Board Member/ Coach	2016 – Present
Bigfork Boosters	Board Member	2023 – Present
Bigfork Youth Basketball	Coach	2019, 2023, 2024

**Please list any notable achievements in your service to the above organizations:** I had the privilege of working on the VLM board for 6 years. This was my first ever board experience and I feel like I learned a lot of valuable lessons while serving on the board.

**Please describe any other volunteer experience:** Currently, I am very active in my community, helping with local sports and our volunteering for multiple church events.

**Please describe any fundraising experience:** I have written numerous grants for the Bigfork Youth Baseball and for the chiropractic department at my work.

**Please tell us about your family:** My wife Courtney is a physical therapist at Bigfork Valley Hospital. She is originally from Peoria IL. We married and moved to the Marcell area in 2011. We have 2 kids, Avett and Alaya. We enjoy all things outdoors in northern MN.

**Please tell us your hobbies:** I enjoy camping, hunting, sports, fishing, and being outside.

**Why are you interested in serving as a board member?** I thoroughly enjoy supporting VLM however I can.

**How have you been active at VLM or other Outdoor Ministries in the past:** I grew up going to Camp Hiawatha, was then a counselor and canoe guide for VLM and as mentioned, a past board member.

**Why are you interested in serving on the VLM board at this time:** To help find our next CEO!

**Board Nominee Bio: (member 1<sup>st</sup> Term)****Christie E. Manisto****Employer:** First Lutheran Church ELCA International Falls- Pastor**Home Congregation:** First Lutheran Church- International Falls**Please list your past and present memberships on boards, committees and organizations:****Organization:**

Camp Onomia	Board Member	2013-2015
Lutheran Coalition for public policy	Board Member	2014-2015
St. Andrew's Refugee Services	Board Member	2019-2023
Trinity Lutheran Church	Pastor	2008-2015
Beautiful Savior Lutheran Church	Pastor	20-15-2018
St. Andrew's United Church of Cairo	Pastor/ member of co leadership team	2019-2023

**Please List any notable achievements in your service to the above organizations:** Was on the board with Onomia during their major renovation of their retreat center. Helped see the large refugee organization through COVID.**Please describe any other volunteer experience:** I spent the past four years working as a missionary in accompaniment to 570 refugee staff and 45000 refugees. I have also worked in various organizations as a volunteer over many years (churches united for the homeless, etc)..**Please describe any fundraising experience:** As a pastor I live within fundraising as part of my job (although truth be told is it not one of my major gifts). I also was in charge of all grant funding, including writing and maintaining grant reports at St. Andrew's in Cairo.**Please tell us about your family:** My husband Steve is a special education teacher who works at Northland Learning Center in Virginia MN (yes he commutes a LOT) Our two daughters Winter, 26 lives and works in Minneapolis and Sunday 24 is a musical theater artist and lives and works in Brooklyn NYC.**Please tell us your hobbies:** I enjoy camping, reading, running, being in nature, music**Why are you interested in serving as a VLM board member:** I was invited to consider serving and feel it would be a wonderful way to both represent the church as well as give back to VLM.**How have you been active at VLM or other Outdoor Ministries in the past?** I have been affiliated with camp for over 35 years. I was on staff in 1988-89; and then again in 2001-2002. I have volunteered with camp and consider them an important partner in ministry.**Why are you interested in serving on the VLM board at this time?** Please see above.**Board Nominee Bio: (at large 2<sup>nd</sup> term)****Dr. Bridget Sundell****Employer:** Sundell Eye Associates - Ophthalmologist**Home Congregation:** Ledgerock Community Church, Ely, MN**Please list your past and present memberships on boards, committees and organizations:****Organization:**

Northwoods Surgery Center	Board	President/CEO	2012 – present
---------------------------	-------	---------------	----------------

**Please tell us about your family:** Husband Jeff, Daughters Grace and Ava**Please tell us your hobbies:** Running, Skiing, Cooking**Why are you interested in serving as a VLM board member?** Invited by Joel Abenth, I am interested in exploring this new opportunity. It would be a new opportunity for me, so hopefully I can bring value.**How have you been active at VLM or other Outdoor Ministries in the past?** I was a camp counselor in 1991 with VLM when the two camps merged. I grew up going to Camp Hiawatha and met my best friend there when I was 12!**Outgoing Board Members***Megan Moroff**Deacon Stephanie Anderson*



# Endowment Team Report

## 2023 Endowment Report - Year End

1. 2023 New Gifts to Report:
  1. Facilities fun: \$200
  2. Mary Bar fund: \$622.50
  3. Endowment: \$0.00
  4. Patti Ault Fund: \$202,437.00
2. Total Amount Invested (in Thrivent): **\$376,828.82**
  1. Facilities Fund: \$43,420.86
  2. Mary Bar Fund: \$16,898.82
  3. Endowment Fund: \$64,810.93
  4. Patti Ault Campership Fund: \$188,384.95
3. Goal: \$5,000,000 combined through our endowment funds.

## Endowment Committee Members:

1. Evan Moilan
2. Mike Olson
3. Jeff Hakala
4. Dennis Anderson

Respectfully Submitted by Mike Olson

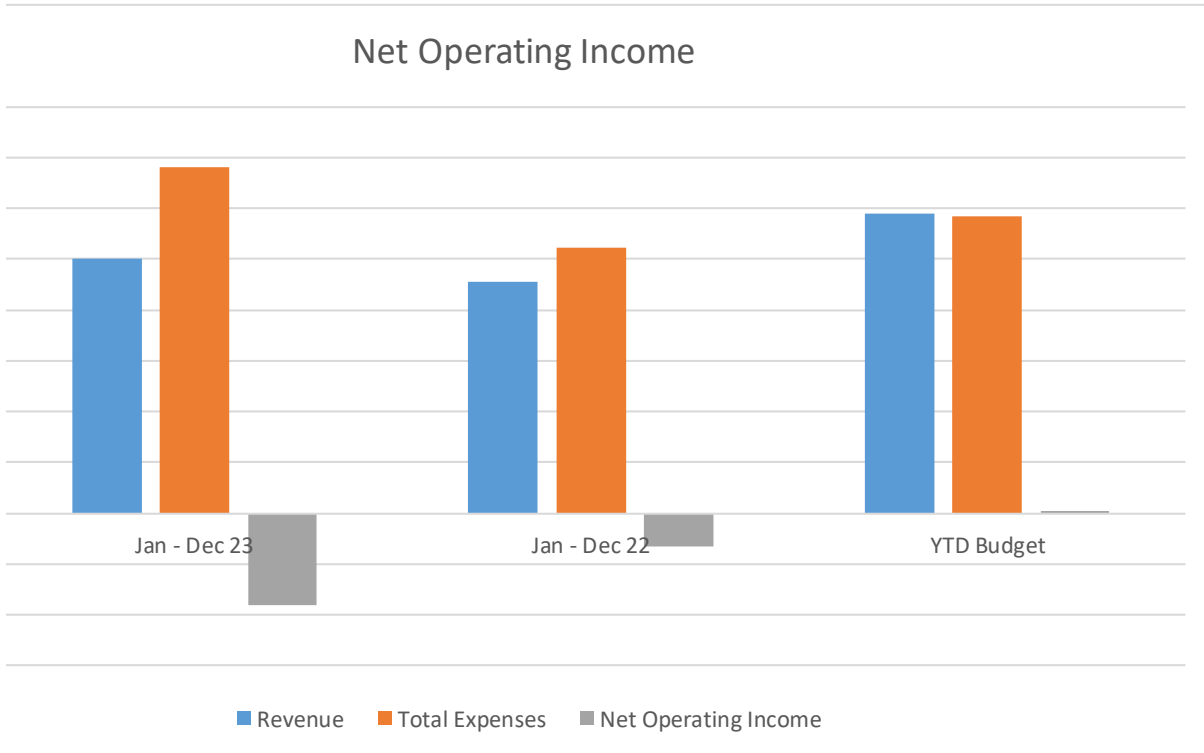
## Financial Report

### Executive Summary

- 2023 revenues fell short of budget, while expenses exceeded budget. 2023 saw a modest increase in operations, but overall, the summer programs have not returned to the expected levels as set by the budget.
- Operating revenues missed budget by \$175k but exceeded prior years' revenue by nearly \$90k.
- Total expenses compared to budget were \$190k unfavorable, driven by higher-than-expected costs in overhead administration, executive transition, increases in summer staff wages to remain competitive, and overall facilities expenses to keep the camps operating.
- The balance sheet saw an overall improvement of net assets by approximately \$650k, driven by continued fundraising for the debt-reduction campaign and restricted asset growth within the endowment.

**Figure 1: Summarized Net Operating Income**

	Jan - Dec 23	Jan - Dec 22	YTD Budget	vs PY	vs Budget
Revenue	\$ 1,000,229	\$ 912,665	\$ 1,176,207	\$ 87,563	\$ (175,978)
Payroll	447,258	370,476	417,819	(76,782)	(29,439)
Other General Admin	428,773	316,580	352,279	(112,194)	(76,494)
Facilities and Other Exp.	484,300	355,789	400,009	(128,511)	(84,291)
Total Expenses	1,360,332	1,042,844	1,170,107	(317,487)	(190,225)
<b>Net Operating Income</b>	<b>\$ (360,103)</b>	<b>\$ (130,179)</b>	<b>\$ 6,100</b>	<b>\$ (229,924)</b>	<b>\$ (366,203)</b>



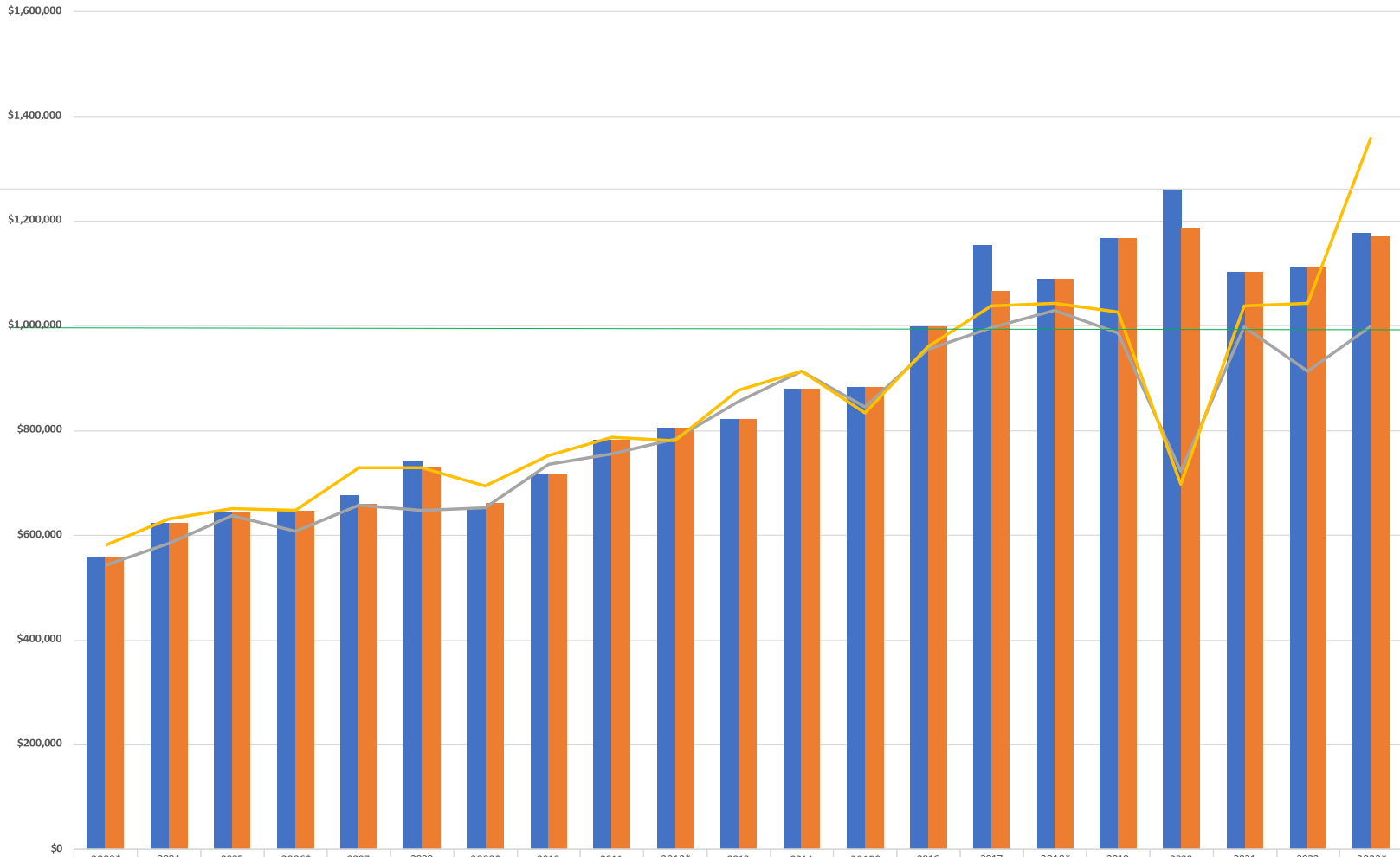
**Figure 2: Summarized Statement of Financial Position**

	<b>Balance Sheet</b>	
	<b>December-23</b>	<b>December-22</b>
Cash	\$ 34,215	\$ 171,417
Accounts Receivable	-	-
Inventory	9,881	9,881
Pre-Paid Expenses	4,151	4,151
<b>Total Current Assets</b>	<b>\$ 48,247</b>	<b>\$ 185,449</b>
Long-Term Assets	\$ 3,729,197	\$ 3,649,998
Restricted Assets	\$ 377,473	\$ 137,044
<b>Total Assets</b>	<b>\$ 4,154,918</b>	<b>\$ 3,972,491</b>
Accounts Payable	\$ 239,126	\$ 58,174
Credit Cards	2,007	(4,214)
Offerings	-	-
Deferred Revenue	14,045	15,133
Accrued Payroll	(6,612)	(6,556)
<b>Total Current Liabilities</b>	<b>\$ 248,566</b>	<b>\$ 62,538</b>
Mission Investment Fund	\$ -	\$ 653,647
PPP Loan(s)	-	-
Prime Note Payable	200,000	200,000
<b>Total Liabilities</b>	<b>\$ 448,566</b>	<b>\$ 916,185</b>
<b>Net Assets</b>	<b>\$ 3,706,352</b>	<b>\$ 3,056,306</b>

Voyageurs Lutheran Ministry  
Profit & Loss Year Comparison  
January through October 2023

	2023 Actual	2023 Budget	Compared to Budget	2022 Actual	2024 Proposed Budget
<b>Ordinary Income/Expense</b>					
<b>Income</b>					
<b>4 · REVENUE</b>					
<b>41 · ANNUAL FUND INCOME</b>					
<b>411 · GROUPS</b>					
4111 · Member PCM	61,332.52	72,000.00	(10,667.48)	61,895.49	60,000.00
<b>4113 · CHURCHES/GROUPS</b>					
41131 · Member Church groups	200.00	1,000.00	(800.00)	200.00	500.00
41133 · Other Group	632.55	0.00	632.55	0.00	0.00
41135 · WELCA	2,700.00	5,000.00	(2,300.00)	3,738.00	2,500.00
4113 · CHURCHES/GROUPS - Other	0.00			0.00	
<b>Total 4113 · CHURCHES/GROUPS</b>	<b>3,532.55</b>	<b>6,000.00</b>	<b>(2,467.45)</b>	<b>3,938.00</b>	<b>3,000.00</b>
411 · GROUPS - Other	0.00			0.00	
<b>Total 411 · GROUPS</b>	<b>64,865.07</b>	<b>78,000.00</b>	<b>(13,134.93)</b>	<b>65,833.49</b>	<b>63,000.00</b>
<b>Total 412 · INDIVIDUAL/Builder</b>	<b>449,951.48</b>	<b>433,789.00</b>	<b>16,162.48</b>	<b>396,811.22</b>	<b>457,000.00</b>
<b>Total 413 · FUNDRAISERS</b>	<b>37,621.20</b>	<b>57,000.00</b>	<b>(19,378.80)</b>	<b>30,226.96</b>	<b>57,000.00</b>
<b>Total 414 · OFFERING INCOME</b>	<b>13,184.60</b>	<b>21,000.00</b>	<b>(7,815.40)</b>	<b>11,798.97</b>	<b>15,000.00</b>
<b>Total 41 · ANNUAL FUND INCOME</b>	<b>565,622.35</b>	<b>589,789.00</b>	<b>(24,166.65)</b>	<b>504,670.64</b>	<b>592,000.00</b>
<b>Total 42 · GRANTS/MEMORIALS/HONORARIUM</b>	<b>53,278.50</b>	<b>73,500.00</b>	<b>(20,221.50)</b>	<b>70,709.44</b>	<b>56,500.00</b>
<b>Total 431 · SUMMER PROGRAM INCOME</b>	<b>221,629.59</b>	<b>279,140.00</b>	<b>(57,510.41)</b>	<b>169,956.06</b>	<b>286,500.00</b>
<b>Total 432 · RETREAT/YR PROGRAM INCOME</b>	<b>135,872.87</b>	<b>200,000.00</b>	<b>(64,127.13)</b>	<b>146,215.84</b>	<b>163,900.00</b>
<b>Total 433 · CANTEEN REVENUE</b>	<b>21,571.12</b>	<b>27,000.00</b>	<b>(5,428.88)</b>	<b>15,284.46</b>	<b>23,000.00</b>
43 · PROGRAM INCOME - Other	0.00			0.00	
<b>Total 43 · PROGRAM INCOME</b>	<b>379,073.58</b>	<b>506,140.00</b>	<b>(127,066.42)</b>	<b>331,456.36</b>	<b>473,400.00</b>
<b>Total 441 · REIMBURSEMENTS</b>	<b>1,238.61</b>	<b>5,800.00</b>	<b>(4,561.39)</b>	<b>4,642.90</b>	<b>1,400.00</b>
<b>Total 442 · MISC REVENUE</b>	<b>1,015.33</b>	<b>978.00</b>	<b>37.33</b>	<b>430.92</b>	<b>15,880.00</b>
<b>Total 44 · MISC REVENUE</b>	<b>2,253.94</b>	<b>6,778.00</b>	<b>(4,524.06)</b>	<b>5,073.82</b>	<b>17,280.00</b>
<b>Total 4 · REVENUE</b>	<b>1,000,228.37</b>	<b>1,176,207.00</b>	<b>(175,978.63)</b>	<b>912,665.26</b>	<b>1,139,180.00</b>
<b>Expense</b>					
<b>5 · EXPENSES</b>					
<b>51 · GENERAL ADMINISTRATION</b>					
Total 511 · PAYROLL YEAR ROUND	447,258.39	417,819.00	29,439.39	370,476.04	379,000.00
Total 512 · TAXES/MEDICAL/PENSION	152,606.80	157,181.00	(4,574.20)	139,967.57	172,520.00
Total 513 · CONTINUING EDUCATION	8,950.88	6,100.00	2,850.88	8,986.02	5,600.00
Total 515 · OFFICE ADMINISTRATION	102,084.20	69,960.00	32,124.20	85,718.51	66,500.00
Total 516 · FINANCIAL DEVELOPMENT	38,062.19	16,650.00	21,412.19	18,034.85	15,000.00
Total 517 · INSURANCE	64,682.71	54,000.00	10,682.71	52,919.75	69,000.00
Total 518 · INTEREST EXPENSE	(1,503.05)	1,000.00	(2,503.05)	(16,327.25)	0.00
Total 519 · MISCELLANEOUS ADMINISTRATION	63,889.67	47,388.00	16,501.67	25,225.02	45,650.00
<b>Total 51 · GENERAL ADMINISTRATION</b>	<b>876,031.79</b>	<b>770,098.00</b>	<b>105,933.79</b>	<b>685,000.51</b>	<b>753,270.00</b>
<b>52 · GENERAL PROGRAM EXPENSE</b>					
Total 521 · SUMMER COMMUNITY	194,447.43	166,900.00	27,547.43	135,137.95	186,005.00
Total 522 · SUMMER PROGRAM MARKETING	2,155.28	1,500.00	655.28	4,770.28	2,000.00
Total 523 · SUMMER PROGRAM RESOURCES	3,765.51	1,500.00	2,265.51	1,334.50	3,600.00
Total 525 · MISC SUMMER PROGRAM EXPENS	7,564.62	13,720.00	(6,155.38)	3,854.69	2,900.00
Total 526 · SUMMER FOOD	77,324.69	63,600.00	13,724.69	48,777.01	78,500.00
Total 527 · RETREAT AND YEAR ROUND MINIS	26,209.48	27,200.00	(990.52)	25,614.25	26,050.00
<b>Total 52 · GENERAL PROGRAM EXPENSE</b>	<b>317,301.26</b>	<b>285,120.00</b>	<b>32,181.26</b>	<b>226,028.68</b>	<b>305,445.00</b>
<b>53 · FACILITIES</b>					
Total 531 · GENERAL MAINTENANCE	56,810.44	24,500.00	32,310.44	26,723.41	24,500.00
Total 532 · UTILITIES	69,861.15	65,500.00	4,361.15	71,379.49	67,000.00
Total 533 · WATERCRAFT	295.78	2,000.00	(1,704.22)	0.00	1,000.00
Total 534 · VEHICLES	24,816.62	21,650.00	3,166.62	29,892.64	25,000.00
Total 535 · SPECIAL PROJECTS	15,075.71	769.00	14,306.71	269.40	0.00
Total 536 · MISC. FACILITIES	139.00	470.00	(331.00)	1,494.94	300.00
<b>Total 53 · FACILITIES</b>	<b>166,998.70</b>	<b>114,889.00</b>	<b>52,109.70</b>	<b>129,759.88</b>	<b>117,800.00</b>
<b>Total 5 · EXPENSES</b>	<b>1,360,331.75</b>	<b>1,170,107.00</b>	<b>190,224.75</b>	<b>1,040,789.07</b>	<b>1,176,515.00</b>
<b>Net Ordinary Income</b>	<b>(360,103.38)</b>	<b>6,100.00</b>	<b>(366,203.38)</b>	<b>(128,123.81)</b>	<b>(37,335.00)</b>

### Historic Budget vs. Revenue



	2003*	2004	2005	2006*	2007	2008	2009*	2010	2011	2012*	2013	2014	2015*	2016	2017	2018*	2019	2020	2021	2022	2023*
Budget - Revenue	\$559,100	\$624,400	\$644,200	\$647,650	\$676,175	\$743,250	\$653,424	\$717,970	\$782,310	\$806,764	\$821,995	\$879,872	\$883,373	\$998,366	\$1,154,080	\$1,090,620	\$1,167,000	\$1,262,010	\$1,103,690	\$1,112,470	\$1,176,200
Budget - Expenses	\$559,100	\$624,400	\$644,200	\$647,650	\$660,150	\$729,250	\$661,710	\$717,970	\$782,310	\$806,764	\$821,995	\$879,872	\$883,373	\$998,366	\$1,067,080	\$1,090,620	\$1,167,000	\$1,187,010	\$1,103,690	\$1,112,470	\$1,170,107
Actual - Revenue	\$542,753	\$584,196	\$637,413	\$608,217	\$657,422	\$648,415	\$652,170	\$736,127	\$756,486	\$783,685	\$854,828	\$913,054	\$844,586	\$955,498	\$996,954	\$1,030,340	\$986,589	\$722,660	\$998,386	\$912,665	\$1,000,228
Actual - Expenses	\$580,979	\$630,820	\$650,710	\$647,586	\$729,250	\$729,811	\$694,867	\$752,959	\$787,470	\$781,020	\$876,272	\$914,141	\$833,451	\$959,180	\$1,037,580	\$1,042,360	\$1,026,010	\$698,062	\$1,038,860	\$1,042,840	\$1,360,332



VIA EMAIL

January 2, 2024

Camp Hiawatha, Voyageurs Lutheran Ministry  
Attn: Evan Moilan, Interim Executive Director  
1105 E. Superior Street Suite 2  
Duluth, MN 55802

RE: Deer Lake (VLM) Conservation Easement  
Itasca County, MN

Dear Evan,

Thank you once again for the video call on December 14<sup>th</sup> with your executive committee and for your interest in preserving your property through a conservation easement held by the Minnesota Land Trust (the “Land Trust”). I know how much the property means to your organization and applaud your commitment to preserving its wonderful natural and scenic attributes in perpetuity.

This letter further explains our process for evaluating and accepting conservation easements and confirms certain details that we have discussed related to this particular transaction.

I have enclosed multiple fact sheets regarding the conservation easement transaction and the Land Trust’s process. These fact sheets are intended to go more in depth than is possible in this letter; therefore, please refer to these fact sheets as we step through the process.

**PROPERTY TO BE PROTECTED:**

The conservation easement that we have discussed will cover approximately 66 acres of land in Itasca County, Minnesota. The property to be protected contains hardwood forest in good condition and helps protect the Deer Lake subwatershed, a lake of Outstanding Biological Significance.

**LEGAL OWNER/CONTACT:**

It is my understanding that the legal owner of the property is Voyageurs Lutheran Ministry, which is a non-profit corporation organized in the state of Minnesota. You are the Interim Executive Director of that entity and will continue to be our contact for discussions regarding the project.

#### ATTORNEY AND OTHER ADVISORS:

It is my understanding that you do not yet have an attorney representing you with respect to this matter. Conservation easements are complicated real estate transactions with numerous legal and financial implications. The interests of the Land Trust may at times conflict with your interests as the landowner. Therefore, we strongly encourage you to seek independent legal and other professional advice concerning matters associated with the project.

The Land Trust will help guide you through the process of your conservation easement project, but it cannot provide you with legal or other professional advice or represent your interests. The cost of retaining an attorney or other advisors will be at your expense.

#### PROJECT FUNDING:

The Land Trust currently has funding available to cover the costs of developing, accepting, and purchasing conservation easements in the area that includes your property. This funding is provided by the Outdoor Heritage Fund, as recommended by the Lessard-Sams Outdoor Heritage Council. The purpose of the Outdoor Heritage Fund is to protect, restore, and enhance wetlands, prairie, forests, and habitat for fish, game, and wildlife.

#### CONSERVATION VALUES:

I had an opportunity to visit your property on September 14<sup>th</sup>, 2022 and August 24<sup>th</sup>, 2023 to become more familiar with the land and its natural features. Based upon these site visits and a review of other pertinent information, we believe your property possesses important conservation values which generate benefits to the public including wildlife habitat, water quality, and scenic quality and appears to be an appropriate candidate for a conservation easement held by the Land Trust.

#### TITLE WORK:

The Land Trust completes title work for all its conservation easement projects. The purpose of this title work is to identify and resolve any potential issues and ensure that there are no title defects or outstanding encumbrances, restrictions, rights, or exceptions that would interfere with the conservation purposes of the easement or the Land Trust's ability to monitor and enforce the easement. The Land Trust covers the customary costs associated with this title work. In some instances, certain title issues require resolution by the landowner, at the landowner's expense.

Thank you for delivering your property abstract to First American Title Insurance Company. The title company will work directly with you to arrange for your abstract to be returned once the title search has been completed.

While the title work will officially determine the status of mortgages, it is our understanding that you do not have any mortgages on your property or other encumbrances which would interfere with your granting of the easement.

#### ENVIRONMENTAL ASSESSMENT:

The Land Trust, at its expense has conducted an environmental assessment of your property as a part of our due diligence. This review determines whether there are any recognized environmental conditions on the land, such as storage tanks, waste disposal areas, or other issues which could affect the health or safety of the public or the environmental conditions of the land. We have notified you that there are environmental issues on the property and have worked with you to satisfactorily address these issues with the removal of the oil drums that were found on the property.

**TRANSACTION:**

An appraisal has been completed to establish the fair market value of the conservation easement. We anticipate that the purchase price will be the full appraised value of the conservation easement. Once a purchase price has been finalized, we will ask you to execute an Option for Purchase of Conservation Easement.

**PROJECT REVIEW AND APPROVAL PROCESS:**

We are currently completing our organizational evaluation of your project to determine if it is an appropriate project for the Land Trust. The project requires formal review and approval by the Land Trust's Board of Directors. We anticipate that the Board will review this project at its February 2024 meeting.

**TIMING:**

As we have discussed, if we proceed with your project, we hope to be able to complete the conservation easement by June 2024. While we will do our best to accommodate this timing, please understand that we cannot absolutely guarantee closing the project by a certain date due to a variety of factors, many of which are beyond our control.

**LEGAL DESCRIPTION, MAPPING, & SURVEY:**

We require a survey of the property and a preliminary survey has been completed. The surveyor will mark the boundaries of the conservation easement once the boundaries are finalized. We will let you know when the final survey is completed and will provide you with a copy. We will also work with our consultant, Bismarck Map Company, to map your property and will seek your input on the accuracy of these maps as the project continues. We will also create detailed maps for the baseline documentation report outlined below.

**CONSERVATION EASEMENT TERMS:**

Based upon our past discussions and agreement on the general terms of the conservation easement, the Land Trust and its attorney will create an initial draft of the conservation easement for your review and comments. Once we have discussed and agreed upon the terms and restrictions of the easement, we will schedule a closing to occur by mail or in-person at which the final document will be signed by both parties. The easement will be recorded in the county real property records and a copy of the recorded easement will be sent to you.

Land Trust easement drafting and typical closing costs are at our expense. Review by your attorney will be at your expense.



The basic terms of the conservation easement that we have agreed include the following:

- Industrial, mining, and residential uses prohibited.
- Agricultural uses prohibited.
- Division of the property prohibited.
- Habitat management permitted in accordance with an approved plan.
- Existing trails permitted; additional trails permitted with approval.

#### BASELINE DOCUMENTATION REPORT :

The Land Trust, at its expense, will also be completing a baseline documentation report documenting the condition of your property at the time the easement is completed. I will schedule this site visit with you in the coming weeks. This report is necessary for us to be able to monitor the land and determine compliance with the terms of the easement in the future. After your review and comments, this document will be finalized and signed by you and the Land Trust at or near closing. You will be given an original copy of the report signed by both you and the Land Trust.

#### HABITAT MANAGEMENT PLAN:

The conservation easement will allow vegetation management only in accordance with an approved habitat management plan. The Land Trust currently uses state funding to obtain a habitat management plan and we will provide a copy to you. An ecologist will be selected to work with you and the Land Trust to draft the habitat management plan. This plan provides recommendations to guide the management of ecological communities on your land. While active habitat management of the property is not typically required by the conservation easement, long-term protection of your property's conservation values may be strengthened through appropriate habitat management activities over time. This plan provides you with the guidance to manage habitats in a manner that is ecologically appropriate and consistent with the terms of the easement.

#### CONSERVATION EASEMENT STEWARDSHIP FUNDING:

For each conservation easement we accept, the Land Trust calculates the funding needed to support ongoing monitoring, and possible enforcement of the easement in perpetuity. We then seek to cover that amount through a one-time, upfront payment to our stewardship and enforcement fund. Using our internal cost analysis, we estimate that \$24,000 is needed to adequately cover these costs with respect to your easement.

The Outdoor Heritage Fund will fund the stewardship costs. While the required stewardship contribution is secured, if you would like to contribute additional funds to the Land Trust to further enhance our ability to preserve lands across the state, please let me know. I am also happy to share additional information about how the Land Trust determines this stewardship amount and why it is so vital to the success of a permanent conservation easement project.

#### PUBLIC INFORMATION AND PUBLICITY:

Conservation easements are documents recorded in the public land records. As a result, certain information about the project can be accessed by members of the public, including

the contents of the easement. The Land Trust publicizes certain details of our conservation projects in order to encourage others to protect their land and to raise the resources needed to support this work. In addition, this project will use funding from the Outdoor Heritage Fund, which requires that the Land Trust report certain aspects of our conservation achievements, including information about those projects we have completed with their funding. However, the Land Trust respects that many landowners are sensitive to extensive public exposure and takes landowner privacy seriously.

**SIGNAGE:**

The Outdoor Heritage Fund requires that one sign recognizing the funding source be placed where practicable on your property. In addition, the Land Trust will mark the boundaries of the conservation easement with small 3"x5" signs to assist in protecting the property going forward in time.

**ADDITIONAL INFORMATION**

I will be your contact at the Land Trust for this project and can be reached at (218) 336-2031 or [rschoolderman@mnland.org](mailto:rschoolderman@mnland.org). Please let me know if you have any questions. For more information about the Land Trust, go to [www.mnland.org](http://www.mnland.org).

Again, the intent of this letter is to outline the process and general terms of the transaction. We will continue to work with you to complete this project, knowing that either of us may choose not to continue with the project at any time until a final conservation easement has been signed.

We ask that you sign and date this letter below indicating your receipt and acknowledgement of its contents and the enclosures. Please return the signed letter to us by scanning and emailing me a copy.

We are thrilled with your organization's interest in working with the Land Trust. We look forward to our continued conversations and to taking the next steps with you on this exciting project.

Sincerely,

A handwritten signature in black ink, appearing to be 'Ruurd Schoolderman', written over a horizontal line.

Ruurd Schoolderman  
Program Manager

**Enclosures:**

1. Land Trust Conservation Easement Project Process
2. Baseline Documentation Reports Fact Sheet
3. Land Trust Stewardship Fact Sheet

4. Conservation Easement Monitoring
5. Requesting Approvals from the Minnesota Land Trust
6. Transferring Land Protected with a Conservation Easement

I have received a copy of this letter and the enclosures and acknowledge their contents:

By: \_\_\_\_\_ Date: \_\_\_\_\_

cc: Amy Schwarz, Senior Staff Attorney  
Elaine Tecklenburg, Paralegal



## *Conservation Easement Project Process*

---

### **Stage 1: Project Selection**

#### **Identification, Ranking, and Selection**

The Minnesota Land Trust reaches out to landowners, reaches out to potential landowners, and gathers information about potential conservation easement projects. This information gathering may include mapping, visiting the site, and/or talking with the landowner. The Land Trust evaluates potential conservation easement projects based on organizational mission, program goals, and funding availability, and selects a subset to move forward.

### **Stage 2: Due Diligence**

#### **Initial Site Visit**

The Land Trust completes a thorough walk-through of the property to observe the land and gather information from the landowner on the conservation values of the property, potential environmental hazards, and title information. The Land Trust may discuss the proposed conservation easement terms and boundaries at this time. In some cases, this visit may be combined with a visit during the project selection stage.

#### **Environmental Review**

The Land Trust will complete an environmental site assessment of the property. If issues arise, they are reviewed within the Land Trust and shared with the landowner.

#### **Preliminary Title Review**

The Land Trust obtains the property abstract or deed and order title work. In some instances, property title issues may arise that the landowner needs to address. Further title review occurs throughout the process, in particular following the completion of the survey.

#### **Landowner Readiness**

The Land Trust will gather information and determine whether the landowner is ready to move forward and if any significant obstacles stand in the way of completing the conservation easement.

### **Stage 3: Implementation**

#### **Draft Conservation Easement**

The Land Trust prepares a first draft conservation easement for the landowner to review.

#### **Survey**

The Land Trust engages a surveyor to create a legal description of the conservation easement and clarify any title issues. Once completed, the surveyor marks the boundary of the conservation easement.

#### **Appraisal (if applicable)**

If the project is a purchased conservation easement, the Land Trust orders a qualified appraisal to substantiate the value of the conservation easement.

---

### **Landowner Engagement Letter**

The Land Trust sends the Landowner Engagement Letter to the landowner to confirm details related to the potential easement. The landowner will be requested to sign and date the letter to certify receipt.

### **Secure Approvals**

The Land Trust board of directors reviews the project.

### **Option Agreement (if applicable)**

After the final purchase price has been negotiated for purchased conservation easements, the Land Trust attorney drafts an option agreement. The Land Trust sends this along with \$100 earnest money to the landowner. If agreeable to the landowner, they deposit the check and return a signed option to the Land Trust.

### **Management Plan(s)**

The Land Trust engages a contractor to write a habitat management plan and potentially detailed action plan(s) for the property. The contractor works with the landowner to create a plan that accurately reflects the property's needs and the landowner's goals. The Land Trust reviews the plan(s) for approval and provides final copies of the plan(s) and approval letter(s).

### **Baseline Documentation Report**

Land Trust staff prepares a draft baseline documentation report and provide a copy to the landowner for review not less than two weeks prior to closing. The report documents the current state of the property to ensure that the conservation values of the property are illustrated and stewarded. The Land Trust and the landowner sign the final report at closing.

## **Stage 4: Closing**

### **Prepare for closing**

The Land Trust, in coordination with the landowner, sets a closing date. Any final documents related to title work and purchase (if applicable) are prepared.

### **Finalize and Record Documents**

Final documents are prepared for signature and recording by the Land Trust. The Land Trust and the landowner meet at a title company to complete the closing of the conservation easement transaction, or alternatively the closing is completed by mail. A title company records the final documents in the county recorder's office and returns the original documents to the Land Trust office in St. Paul. Relevant documents are provided to the landowner at or following closing.

## **Stage 5: Stewardship**

### **Defend Easement Forever**

In partnership with the landowner and the community in which the property sits, the Minnesota Land Trust begins its long-term commitment to protecting the land and preserving its conservation values into the future. To steward the conservation easement, a monitoring visit takes place once every year.

---



## Minnesota Land Trust

### *Conservation Easement Monitoring*

---

Monitoring is the regular inspection of property protected with a conservation easement. It is the core component of the Minnesota Land Trust's conservation easement stewardship program. It helps the Land Trust build relationships with landowners, allows the Land Trust to discover any problems on the land, provides an opportunity to document any changes in the property or its ownership, and is critical for the Land Trust in order to meet its legal obligations.

#### ***Monitoring Visits***

It is the policy of the Minnesota Land Trust to monitor each property protected by a conservation easement once a year—and more frequently if necessary. It is our goal to prevent easement violations; frequent contact with the land and the landowner helps us achieve that goal.

The monitoring season typically runs from April through October. With the ever increasing portfolio of protected properties, the monitoring season is continually expanding.



Monitoring is most frequently done in person with a Land Trust staff or certified volunteer monitor, walking the protected property. However, in some cases monitors review property by car, boat, or aerial flyover. Each conservation easement and each parcel of land is unique so each requires its own monitoring approach.

#### ***Working with Landowners***

Each year, the Land Trust assigns a monitor to visit every property protected by a Minnesota Land Trust conservation easement. The assigned monitor will then contact the landowner to arrange a time to visit the property.

The Land Trust welcomes and encourages landowners to accompany the monitor during the monitoring visit. Walking the land together can be important for a number of reasons, including:

- Landowners have a more intimate connection to their property than does the Land Trust and their knowledge can make the visit more effective and efficient.
- There is an opportunity for a landowner to raise any questions about the easement or to discuss any future plans or goals for the property, which can help prevent unintended violations.

A landowner may also ask someone else—perhaps a family member or neighbor—to accompany the monitor.

### ***Documenting the Condition of the Protected Property***

Conservation easements are perpetual and property conditions change over time. From the baseline documentation report, the Land Trust creates a monitoring workbook for staff and certified volunteer monitors to use when on the Protected Property. The monitoring workbook includes a “monitoring plan,” which serves as a guide for the monitor as to the most efficient and effective way to monitor the property. The monitors make notes of any changes to the property. All landowners are provided with a summary of the monitoring visit by the Land Trust office.

### ***Preventing Problems vs. Discovering Violations***

The essence of any conservation easement monitoring program is to make sure that landowners are complying with the terms of their easement. Through periodic monitoring, the Land Trust can often detect potential problems early—before they become serious violations.

However, we also encourage all landowners to contact the Land Trust whenever they have a concern or question about their easement rather than waiting for the annual monitoring visit. Though thoughtfully drafted, conservation easements can be confusing. Seeking an interpretation early can avoid problems later.

In the end, the Land Trust must be prepared to correct any violations of its easements. This is the commitment we make to all landowners who entrust us with the responsibility to protect their land. The capacity to effectively enforce conservation easements is also a federal, state, and internal requirement for an easement holder. If a violation is discovered, we will work with the landowner whenever possible to have the situation corrected without further action. Legal enforcement is a remedy of last resort.

### ***Volunteers***

Volunteers play a critical role in the Land Trust's monitoring program. They are able to extend the Land Trust's presence into local communities throughout the state and personally work with landowners when staff might not otherwise be able to do so. All volunteer monitors are required to complete a training and certification program so that they can be skilled and informed representatives for the Land Trust. The Land Trust holds training sessions for new and returning volunteers annually in multiple locations across the state.

It is important to note that although our volunteers are well-trained, they do not interpret the conservation easement. Volunteers gather information about the land and landowner questions or concerns and report them to Land Trust staff. The Land Trust also assigns a staff member to monitor each property at least once every five years so that staff remain familiar with all of the properties we protect.



## Minnesota Land Trust

### *Conservation Easement Stewardship*

*Working In Partnership with Landowners and the Communities in Which Their Lands Are Located*

---

Conservation easements are forever. With each conservation easement, the Minnesota Land Trust accepts responsibility to protect that land and its conservation values into the future. Stewardship in the Minnesota Land Trust is that portion of our program designed to make sure that we do meet our responsibility for each conservation easement over time.

#### ***Components of a Conservation Easement Stewardship Program***

There are a number of specific components to the Minnesota Land Trust's conservation easement stewardship program. These include:

- Creating the baseline documentation report and updating it over time.
- Monitoring the property.
- Conservation easement administration.
- Landowner relations.
- Community relations.
- Conservation easement enforcement and defense.



Each component of the program, discussed generally below, plays a critical role in making sure the Land Trust fulfills its obligations to our landowners and the lands they have placed in our care.

#### **Baseline Documentation Report**

The baseline documentation report is a critical component of the conservation easement process. Documenting the condition of a parcel of land subject to a conservation easement at the time the easement is granted, it is the background information against which the property is monitored and evaluated over time to determine if there has been a violation of the terms of the easement. The report can also be used to help the landowner become more familiar with the property's natural features and conservation values.

The Land Trust updates baseline documentation reports to reflect changes. An update serves as a current conditions report and does not replace the original baseline report or the conservation easement.



## **Monitoring**

Monitoring is the regular inspection of property protected with a conservation easement. It is the core component of the Minnesota Land Trust's conservation easement stewardship program. It helps the Land Trust build relationships with landowners, allows the Land Trust to discover any problems on the land, provides an opportunity to document any changes in the property or its ownership, and is critical for the Land Trust in order to meet its legal obligations.

## **Administration or Recordkeeping**

Our commitment to land preservation cannot be met unless we also manage our program to keep track of the status and condition of the lands protected by our conservation easements. Therefore, we also:

- Document the condition of lands protected by each easement at the time the easement is completed by completing a baseline documentation report, and updating it over time as changes in the landscape dictate.
- Monitor the condition of the property at least annually.
- Maintain accurate records regarding each conservation easement accepted by the Land Trust, including landowner's information, approvals or interpretations provided, reserved rights exercised, etc.

## ***Working in Partnership***

The Minnesota Land Trust recognizes that it cannot be successful without working in cooperation with the many landowners dedicated to protecting their lands through conservation easements. The Land Trust respects the commitment made by these landowners and is dedicated to working with them in a respectful and professional manner. In all of our stewardship activities, we strive to:

- Establish and maintain good relationships with our landowners.
- Establish and maintain good relationships with the communities in which our easements are located.
- Provide professional, timely responses and service to our landowners.

## ***Voluntary Compliance vs. Legal Enforcement***

The primary objective of our stewardship program is to preserve the conservation values of those lands protected by conservation easements.

Ensuring compliance with the terms of each easement is critical to meeting this objective. The Minnesota Land Trust is prepared to legally defend and enforce its easements when necessary. Legal enforcement, however, is a remedy of last resort. Our program is most successful if compliance is voluntary.

Therefore, we work in partnership with landowners—and the local communities in which our protected lands are located—to encourage voluntary compliance with the terms of our conservation easements whenever possible.

### ***Funding***

The Minnesota Land Trust has created a dedicated stewardship and enforcement fund to provide a long-term, ongoing source of income to cover the ongoing, long-term costs associated with monitoring and managing our portfolio of conservation easements. The fund is also available to cover extraordinary expenses associated with managing, upholding or defending an easement should its terms or validity be at risk.

Contributions to the stewardship fund are pooled from a number of sources, including landowners, and are managed to support all of the overall needs and obligations of the Minnesota Land Trust.

The Land Trust strives to be as efficient and effective as possible in using these funds to support our ongoing stewardship activities. Contributions or donations to the fund are always welcome.

Contact the Minnesota Land Trust for information on how to support our stewardship work.



## Minnesota Land Trust

### *Transferring Land Protected with a Conservation Easement*

---

One of the many advantages of using a conservation easement to protect property is that each landowner retains the right to transfer or sell the land as the landowner wishes, within the terms set out in the conservation easement; while still continuing to protect the special habitat, flora or fauna on that property. Once a conservation easement has been conveyed to the Minnesota Land Trust and recorded in the local land records, it "runs with the land," which means that the conservation easement is binding on both the present and future landowners of the property.

When the Land Trust accepts the conservation easement, it also accepts the obligation to monitor and enforce the conservation easement in perpetuity. Therefore, it is critical for the Land Trust to have regular communication with each generation of landowner. Consequently, Land Trust conservation easements do contain provisions relating to transferring protected land.

#### ***Selling or transferring title***

Any landowner considering the transfer or sale of protected property -- even as a gift to a child or other family member -- should let the Land Trust know of those plans early in the process. That way, the Land Trust can work with those involved -- realtors, attorneys, mortgage companies, prospective buyers or future owners -- to discuss the terms of the conservation easement. In some instances, it may be useful or necessary to monitor the property before the transfer is completed to make sure that there have been no easement issues or violations to date.



Early contact with the Land Trust will help make the transition of ownership go more smoothly.

#### ***Subdividing land***

Minnesota Land Trust conservation easements restrict the division of protected property into multiple parcels with different owners. Typically, unless a conservation easement contains a specific provision allowing the land to be divided, the protected property must be conveyed only in its entirety as a single parcel, regardless of whether it consists of or was acquired as separate parcels or is treated as separate parcels for property tax or other purposes. Other conservation easements may allow the division of the property, but the configuration of the parcels may require the approval of the Land Trust.

Please contact the Land Trust if you are considering conveying only a part of the protected land.

### ***Condemnation***

Occasionally, land protected with a conservation easement may be targeted by a public agency for a public use inconsistent with the terms of the easement. To date, the Minnesota Land Trust has most typically encountered this situation with regard to land wanted for roads or highways or similar public works projects.

To acquire the needed land, the public agency may offer to purchase the property or a portion of it or may suggest or pursue taking the land through condemnation or eminent domain. A simple purchase would not usually extinguish the terms or restrictions of an easement. A judicial condemnation proceeding might be required.

There are provisions in the conservation easement that deal with this issue, but please contact the Land Trust immediately if you receive notice of any proposed condemnation or taking of protected property. The Land Trust will want to look into the issues regarding your specific situation with you as soon as possible.

### ***Notice***

The terms of most Minnesota Land Trust easements require the owner to notify the Land Trust of any conveyance within 15 days after closing and to provide the Trust with the name and address of the new owner and a copy of the deed transferring title. Please stay in close contact with the Land Trust during the transfer of ownership. We are happy to help people understand the conservation easement.



## Minnesota Land Trust

### *Requesting Approvals from the Minnesota Land Trust*

---

Once a conservation easement is completed between the landowner and the Minnesota Land Trust, property ownership continues as usual. The landowner still owns and uses the land. However, some activities are restricted by the easement and others may require approval by the Land Trust prior to implementation of that activity so that the conservation values of the land are not lost or compromised. All Land Trust easements require that a landowner give notice to the Land Trust before undertaking any activity that might adversely impact the conservation values of the property.

Please read your easement before initiating any changes to your property. If you are unsure about whether you can proceed with your plans or whether you need Land Trust approval for a certain activity, please call and talk with us. We can discuss your plans with you and help you determine if they are in accordance with the terms of your easement. While *every conservation easement is different*, the following summarizes some of the provisions frequently found in Land Trust easements.

#### ***Activities requiring Land Trust approval***

Many conservation easements specify activities that can be undertaken by a landowner with the prior approval of the Land Trust. Activities that, if allowed, may require prior approval include:

- Building new structures and improvements or expanding existing ones.
- Locating a building envelope.
- Habitat restoration or improvement under an approved plan.
- Woodland or forest management under an approved plan.
- Activities to accommodate expanding utilities or roads.
- Division of the property into separate parcels with separate owners.
- Changing or expanding trails.

This list is not all inclusive. Be sure to check your easement or contact the Land Trust stewardship department with your questions.



#### ***Content of request***

*A request should be in writing* or by email, and include sufficient information to allow the Land Trust to make an informed decision on whether the proposed activity is consistent with the terms and purposes of the Easement. At a minimum, this should include:

- Location, nature, time frame and scope of the proposed activity.
- Proposed use, design and location of any building, structure or improvement.
- Potential impact to the Conservation Values on the Protected Property.
- Plans for any needed restoration of the Protected Property following construction.

***Timing of request***

If you do need an approval, please contact the Land Trust as soon as possible so that your plans are not unnecessarily delayed. The terms of most easements require that requests be made at least 30 days prior to the date proposed for initiating the activity in question. The Land Trust will then review the proposal and evaluate whether the activity is consistent with the terms and purposes of the easement and respond in writing to the landowner.



## *Baseline Documentation Reports*

---

The baseline documentation report (“baseline report”) is a critical component of the conservation easement process. Documenting the condition of land subject to a conservation easement at the time the easement is granted, it is the background information against which the property is monitored and evaluated over time to determine if there has been a violation of the terms of the easement.

In the event of a controversy between the landowner and the Minnesota Land Trust (“Land Trust”), the baseline report can be used as a basis for resolving the dispute. The report can also be used to help the landowner become more familiar with the property's natural features and conservation values.

In addition, the IRS requires all conservation easement donors to have a completed, signed baseline report when claiming an income tax deduction. See Treasury Regulations §1.170A-14(g)(5) for additional information on IRS requirements.

It is the practice of the Land Trust to prepare a baseline report for all lands on which it holds a conservation easement to comply with national accreditation standards, grant funder requirements, and its own internal policies.

### **Baseline reports contain text, maps, and photographs with information such as:**

- Location of the protected property.
- Description of the surrounding area and the context in which the property is located.
- An overview of the natural features, vegetation or land cover, water features, and flora and fauna associated with the property.
- Natural history and land use history, including current uses of the property.
- Locations of existing and future roads, trails, buildings, fences, and other improvements.



### **Site Visit**

The baseline report preparation involves a site visit from Land Trust staff. During the site visit, Land Trust staff will record and photograph natural and artificial attributes of the property. The locations of existing roads, trails, buildings, fences, and/or other improvements to the property

will be mapped during the visit. It is helpful, but not necessary, for the landowner to be present during the site visit.

**Timing:**

The baseline report is completed and signed at the same time the conservation easement is signed. The Minnesota Land Trust asks the landowner to review the report for accuracy and to sign a certification indicating that the baseline report accurately reflects the condition of the property at the time the easement was completed. A Minnesota Land Trust staff person familiar with the property signs a certification page as well.

**Landowners Receive a Copy of the Baseline Documentation Report:**

All landowners receive a copy of the baseline report covering their land. While the report was created to aid the Land Trust in fulfilling its promise of protecting the land forever, it is also an attractive and informative document about the land that landowners can share with others and keep as a special illustration of the land they love.

**Updates to the Baseline Documentation Report:**

Over time, land and its ownership changes. For example, a landowner may build a new home or restore the land to native wildlife habitat. The conservation easement may change as well, with amendments to the easement to add land or clarify language to better protect the conservation values of the land. In addition, we may want to take advantage of advances in mapping and photograph technology or add information that was not available when the easement was signed.

The Land Trust updates baseline reports to reflect these changes. An update serves as a current conditions report and does not replace the original baseline report or the conservation easement. The stewardship staff at the Minnesota Land Trust look forward to working with landowners to map, photograph, and document their beautiful properties for the long-term protection of their land.



**AN APPRAISAL REPORT**

**OF**

**Camp Hiawatha Conservation Easement**

**LOCATED AT**

**Deer Lake Road  
Section 26 T. 57N., R. 26W  
Itasca County, Minnesota 55945**

**AS OF**

**November 9, 2023**

**FOR**

**Mr. Ruurd Schoolderman, Program Manager  
The Minnesota Land Trust  
394 South Lake Ave. Suite 404  
Duluth, MN 55802**

**BY**

**Dwight W. Dahlen, MAI, SRA**

**DAHLEN, DWYER, FOLEY & TINKER  
17837 George Moran Drive  
Eden Prairie MN 55347**



# DAHLEN, DWYER, FOLEY & TINKER

Your Local Valuation Experts since 1978

Dwight W. Dahlen, MAI SRA  
Daniel E. Dwyer  
Sean M. Foley  
Jeffrey A. Dahlen, MAI  
Michael T. Tinker, MAI

Real Estate Appraisals  
Consultation  
Expert Witness  
Market Research

November 15, 2023

Mr. Ruurd Schoolderman, Program Manager  
The Minnesota Land Trust  
394 South Lake Ave. Suite 404  
Duluth, MN 55802

RE: Deer Lake  
Camp Hiawatha Conservation Easement

Dear Mr. Schoolderman:

In accordance with your request, I have prepared an “appraisal report” on the above referenced property, an unimproved recreational parcel containing 68.04 acres, across from Deer Lake, 13 miles northwest of Grand Rapids.

The purpose of this appraisal is to establish the effect on value resulting from the imposition of the proposed conservation easement that will impact the larger parcel. This appraisal contains the appropriate “scope of work” deemed necessary to produce credible assignment results relevant to the “intended use” which is identified to be for grant reimbursement and negotiation. The “intended users” are the Minnesota Land Trust (MLT) and the Minnesota DNR. The “before and after” methodology has been employed.

The valuation opinion is being developed under a hypothetical condition where it is assumed that the MN DNR is acquiring the conservation easement directly from the landowner.

The following demonstrates the appraiser’s procedure for developing the opinion of easement price, which reflects the diminution in value as a result of the proposed easement.

<b>Market Value “Before” the Encumbrance</b>	<b>\$140,000</b>
<b>Market Value “After” the Encumbrance</b>	<b><u>\$47,500</u></b>
<b>INDICATED EASEMENT PRICE:</b>	<b>\$92, 500</b>

The procedure which is professionally recognized has produced the following indication of easement price.

**NINETY-TWO THOUSAND FIVE HUNDRED DOLLARS**  
**(\$92,500)**

The above opinions have been developed by use of a “hypothetical condition” which assumes the conservation easement is in place and the effects on value that may be created” and based on an anticipated diminution in value to the subject property. The value of the conservation easement is predicated on the easement agreement, a copy of which has been placed in the Addendum of the appraisal. As of the effective date of the appraisal, the easement has not been signed, but the easement area has been identified and a majority of the covenants have been agreed to. This appraisal report has been made in conformity with the following:

1. The "Uniform Standards of Professional Appraisal Practice" (USPAP) promulgated by the Appraisal Standards Board (ASB) of the Appraisal Foundation.
2. The MNLT “Contract For Appraisal Services” presented in the Addendum
3. The MN DNR’s Supplemental Appraisal and Appraisal Review Guidelines dated January 1, 2016

This appraisal is made subject to certain limiting conditions and assumptions as hereinafter expressed. Such facts and information as contained herein were obtained from sources that I consider reliable and are true to the best of my knowledge and belief. Information in this report was gathered from sources believed to be reliable, but is not guaranteed.

The following report describes my method of approach, contains data gathered in my investigation, and demonstrates my analysis in developing the opinion of easement value. I appreciate the opportunity for this assignment and welcome any questions you may have in regards to my analysis.

Respectfully submitted,

DAHLEN, DWYER, FOLEY & TINKER, INC.



Dwight W. Dahlen, MAI SRA  
Certified General Real Property Appraiser  
MN License #4001430  
DWD/dwd  
DDF&T File #: 23-201

**2023 Annual Meeting**  
**February 10<sup>th</sup>, 2024**  
**Messiah Lutheran Church, Mt. Iron**

**Appendix**



1325 N. 45<sup>th</sup> Ave E., Duluth, MN 55804  
800-331-5148 [vlm@VLMcamps.org](mailto:vlm@VLMcamps.org)  
[www.VLMcamps.org](http://www.VLMcamps.org)

---

Voyageurs Lutheran Ministry provides opportunities for Christ-centered spiritual growth, leadership development, and outreach in God's great Northwoods!

**Table of Contents:**

Member Congregations/Delegates	Pg. 2-3
Thrivent Update	Pg. 3
Summer Community/ Volunteers	Pg. 4-5
Builders and Other Contributors	Pg. 6-8
Founding Families	Pg. 8
Women of the ELCA	Pg. 8
Honorariums & Memorials	Pg. 9-10
Congregational Data	Pg. 11-12

**This document includes the names, congregations, and data behind the generous love and support of camp in God's great Northwoods!**

**Thank you to each and every one of you for making ministry happen.**

## VLM Member Congregations and Delegates

*\*Each member congregation gets 1 Lay delegate per 500 confirmed members*

*\*Rostered Delegates do not count towards the Lay Delegates*

Please contact the VLM Office ([vlm@vlmcamps.org](mailto:vlm@vlmcamps.org)) with any delegate updates

City	Congregation	Roster Deletgates	Lay Delegates
Aitkin	First	Reggie Denton	Phil Martin
			Tom Martin
Aitkin	St. John's	David Becker	OPEN
Aurora	Our Savior's	Greg Anderson	Bill and Debbie Maki
Babbitt	Evangelical	Christina Forsythe	Carroll and Alene Ekman
Barnum	Elim of Blackhoof	David Hagemann	David & Joan Guite
Bigfork	Grace Community		Angie Storlie
Bovey	Bethel-Trinity	Mark Wagner	Brenda Wagner
Brainerd	First	Patricia Bjorklund	OPEN
		Jordan Gades	OPEN
Buhl	First		OPEN
Carlton	Bethesda Evangelical	Seth Wynands	Chris Mitchell
Chisholm	Faith		Edwin Waters
Cloquet	Our Savior's	Nancy Hong	Kyle Tingum
Cloquet	Zion	Judith Anderson-Bauer	Cari Terrio-Johnson
			OPEN
Cook	Bear River		OPEN
Cook	Trinity	Erica Foss	John Jordan
		Kari Olson	Wendy Jordan
Cromwell	Bethany		Leon Houck and Barb Lehti
Culver	Faith	David Erdman	OPEN
Deer River	Bethany	Lisa Buchanan	OPEN
Deer River	Clara		OPEN
Deer River	Suomi Evangelical	Lori Gordon	Marion Leimbach
Deerwood	Salem	Amanda Kempthorne	Whtney Fisher & Jason Kempthorne
Duluth	Concordia	Jeffrey Davis	Bryan and Rachelle Anderson
Duluth	Elim	Victor St. George	
Duluth	Family of God		
Duluth	First	Dianne Loufman	Victor Krause
			Terri Krause
Duluth	Gloria Dei	David Carlson	Brett Amundson
Duluth	LC of the Gd Shepherd	David Mesner	Rachel Cady Loeffler- Kemp
			Erica Wittmers-Graves
Duluth	Kenwood	Jeffrey Holter	Brad and Lynn Kamphenel
Duluth	Our Savior's	Elizabeth Davis	Karl Isakson
Duluth	Trinity	Shivon Miller	Brian and Anne Hinderliter
Duluth	Spirit of God	Nathan Sager	OPEN
Edina	Normandale	Paul Pettersen	OPEN
		Rebecca Gamble	OPEN
			OPEN
		Jeff Beebe	OPEN
Effie	Effie Fredheim		OPEN
Ely	Grace	Eric Thiele	OPEN
Embarrass	Hope	Christina Forsythe	OPEN
Eveleth	United in Christ	Jeanne Madsen	Roger Nelson
			OPEN
Finland	Baptism River	Thomas Murray	Vane Hoff
Floodwood	Hope		OPEN
Grand Rapids	St Andrews	David Anderson	Jan Bilden
			Brenda Larson
			Kayla Jenkins
Grand Rapids	Zion Lutheran	Benjamin Buchanan	Louis Gueltzow
			OPEN

Hackensack	St. Paul's	Lief Espeland	<b>OPEN</b>
Hermantown	Grace	Christoph Schmidt	Patty Miller, Nancy Loberg
Hermantown	Salem	John Ansell	Chad and Amanda Wood
Hibbing	First	John Dietz	<b>OPEN</b>
Hibbing	Our Savior's	Kevin Olson	Jessica Valento
			Sue Berg-Pocquette
			Thomas Hagen (youth)
Hovland	Trinity	William Beckstrand	Jay & Laura LaFavor
Hoyt Lakes	Faith	Charles Bames	Nikki & Rob Swanson
International Falls	First	Christine Manisto	Steve Sarri
International Falls	Zion	Joe Belanger	Jim Stavseth
Iron	Faith United	Christina Kadelbach	Dave Toole
Jacobson	Carmel Lutheran	Mark Wagner	<b>OPEN</b>
Keewatin	Good Shepherd		<b>OPEN</b>
Knife River	Knife River	Susan Berge	Randi Alreck
Littlefork	Littlefork	Andrew Berry	<b>OPEN</b>
Loman	Bethany		<b>OPEN</b>
Lutsen	Lutsen	Thomas Murray	Maribeth Farley
Mahtowa	Salem		Candy Beaulieu
Moose Lake	Hope	Wndy Hjelmberg	Terry Burn
			Kara Burn
Mt. Iron	Messiah	Laura Anderson	Kristy Stanaway
Nashwauk	Nashwauk		Eileen Korpi
Orr	Calvary		Maxine Olson
Outing	Our Savior's	Luke Lekander	Gordon Holmgren
Palo	St. Mark's	Anna Madsen	<b>OPEN</b>
		Jeanne Madsen	<b>X</b>
Pine River	First	Hans Anderson	Erik and Melanie Lindquist
Proctor	United	Elizabeth Davis	Jason Leach
Saginaw	St. John's	Dave Erdman	<b>OPEN</b>
Soudan	St. Paul's	Greg Anderson	<b>OPEN</b>
Talmoon	Jesse Lake	Lori Gordon	Bill and Denyse Trebs
Tower	Immanuel	Elizabeth Cheney	Jennie Erickson
Two Harbors	Bethlehem	Brendan Johnson	Lonnie Fynboh
			<b>OPEN</b>
Two Harbors	Emmanuel	Ben Stewart	Phil Holmbeck
			Judy Holmbeck
Two harbors	Our Savior's Castle Danger		Frederick R. Whitney
Virginia	Gethsemane	Amy Janssen	Deron and Sheila Davidson
			Steve and Deb Manninen
Virginia	Our Savior's	Timothy Ehling	Tucker Nelson
			Ashley Nelson
Warba	Bethel	Mark Wagner	Brenda Wagner
Wright	Bethlehem		Chrystal Suhonen

## 2023 Seasonal Community

Charlie Abenth, Waterfront Coordinator  
Ella Abenth, Kitchen Assistant  
Lars Anderson, Canoe Guide  
Karin Berdahl, Nature & Camping Coordinator  
Lucy Bock, Program Coordinator  
Anna Bock, Canoe Guide  
Emma Bontrager, High School Coordinator  
Emily Brula, Kitchen Assistant  
Andrew Burn, Activities Coordinator & Host  
Kate Bustrom, Canoe Country Assistant Program Director  
Casey Cleveland, Kitchen Assistant  
Jessi Drift, Maintenance Assistant  
Haakon Erdahl, Camp Counselor  
Adrianna Fannemel, Camp Counselor  
Noelle Gunderson, Camp Counselor  
Julia Gwash, Program Coordinator  
Annika Henry, Assistant Program Director

Brian Heuer, Healthcare Coordinator  
Hope Holsinger, Camp Counselor  
Sophia Holsinger, Camp Counselor  
Lauren Jackson, Camp Counselor  
Karlee Jamtgaard, Kitchen Assistant  
Kayla Jenkins, Program Support Staff  
Ashton Jensen, Camp Counselor  
Signe Johnson, Canteen & Packout Coordinator  
Andrew Kottke, Maintenance Assistant  
Abby LaLonde, Healthcare Coordinator  
Eiley Lien, Camp Counselor  
Addison Linder, Kitchen Assistant  
Gabriel Mann, Camp Counselor  
Ftiz Melzl, Camp Counselor  
Anders Mork, Camp Counselor  
Libby Overbye, Kitchen Assistant  
Elizabeth Packer, Canoe Guide  
Bradley Petzer, Camp Intern  
Jeffrey Shaffer, Maintenance Assistant

Rebekah Storlie, Camp Counselor  
Connor Swanson, Maintenance Assistant  
Maija Terrio-Johnson, Camp Counselor  
Alison Trullinger, Canteen & Packout Coordinator  
Jeffrey Vaudrin, Summer Maintenance Manager  
Josephine Walk, Assistant Program Director  
Noah Westerberg, Kitchen Assistant  
Bryanna Wichner, Camp Counselor  
Hannah Wohlrabe, Kitchen Assistant  
Ted Blenkush, Hockey Camp Support Staff  
Savannah Blenkush, Hockey Camp Support Staff  
Kyle Sumnicht, Canoe Guide  
Anders Braatan, Canoe Guide  
Allana Carlson, Waterfront Coordinator  
Micah Johnson, Camp Counselor  
Alexis Gwash, Camp Counselor

### 2023 Other Staff

Louella Hamlin, Kitchen Assistant  
Kevin Docken, Kitchen Assistant  
Gary Greniger, Kitchen Assistant  
Nicole Head, Kitchen Assistant & Host  
Katie Ross, Housekeeper  
Jean Graul, Housekeeper

### 2023 Program Resource People:

Pastor Laura Mills Anderson  
Pastor Ben Stewart  
Rachel Berry  
Ben Maurer  
Rhona Hill  
Daniel Kirschbaum  
Samantha Johnson  
Gayle Anderson  
Pastor Ian McConnel  
Rachel McConnel

Pastor Amanda Kempthorne  
Pastor David Anderson  
Dan Thureen  
Brad Orn  
Michael Braasch  
Tony Reid  
Anders Braatan  
Emma Reineke

## 2023 Volunteers

Amie	Abenth	Jeff	Holter	Steve	Saari
Jill	Abenth	John	Imsland	Joe	Shade
Twilla	Ahola	Ryan	Jagim	Dave	Stark
Brett	Amundson	Julie	Jagim	Jim	Stein
Daphne	Amundson	Micah	Johnson	Peter	Stone
Per	Amundson	Dale	Kaiser	Ava	Sundell
Alan	Anderberg	Brad	Kampheikel	Grace	Sundell
Gayle	Anderson	Vic	Krause	Bridget	Sundell
Jason	Anderson	Vickie	Lange	Betsy	Sween
Betty	Anderson	Larry	Lange	Sharon	Szamatula
Rachelle	Anderson	Margjorie	Lavalier	Pastor Vicki	Taylor
Lori	Astleford	Peter	Lavalier	Sarah	Thillmany
Jim	Aune	Nathan	LeBeque	Sarah	Thilmany
Dave	Bergren	Steve	Leboutilier	Jenny	Thornton
Mark	Boback	Les	Lepisto	Jonathan	Thornton
Annalise	Braatan	Julie	Lepisto	Dave	Thornton
Paula	Braatan	Steve	Lindberg	Dan	Thureen
Bruce	Braatan	Karen	Linne	David	Toole
Jim	Cagle	Mark	Linne	Karolyn	Torgerson
Bob	Carlson	Chris	Manisto	Alison	Trullinger
Luke	Cheney	Karen	Mattson	Curt	Van Deen
Wendy	Deatherage	Pastor Laura	Mills Anderson	Jeff	Vaudrin
Terry	Doxihelly	Barb	Murray	Mark	Wagner
Solveig	Erickson	Bob	Murray	Brenda	Wagner
Roger	Esterby	Harold	Nordin	Deb	Westerberg
Hugh	Etter	Lori	Olson	Noah	Westerberg
Lori	Fride	Maxine	Olson	Doug & Elise	Widen
Bruce	Garbisch	Carolyn.	Olson	JIm	Wilford
Jean	Graul	Gary	Olson	Vicky	Willford
Pastor Bob	Graul	Tom	Pelach	Choralaires	
Janeen	Gueltzow	Sharon	Pelach	Klassen	Family
Louie	Gueltzow	Ron	Ream	Louis	
Julia	Gwash	Darcy	Reich	Terrio Johnson	Family
Louella	Hamlin	Eileen	Rioux	Riley	
Dale	Hanka	Paul	Ronning	Gavin	
Pastor John	Hanson	Bob	Ross	Zoe	
Jim	Haugen	Paula	Ross	Sydney	
Jamie	Hell	Dan	Saarela		

*Thank you to anyone that helped with work day or other projects/  
events alongside or who were missed on the list above.*



## 2023 Builder Members

People who participate in our **Builders Program** provide leadership, energy, vision, and resources for both Camp Hiawatha and Camp Vermilion. VLM Builders continue the legacy of care and dedication created by the first Builders of our two camps. The following people have made an annual financial contribution to our Builders Program to support and sustain the ministry of VLM. Our heartfelt thanks go to this special group of camp friends for their faithfulness to this wonderful ministry.

**318 Builders (18 New2023!) Alphabetical by Last Name.**

### **Voyageurs Level: \$1000 & over**

Ahrlin, Jim & Ginny, Eveleth\*  
 Anderson, Dennis & Betty, Deer River  
 Arola, Glen & Maureen, Mt. Iron  
 Avery, Sean & Erin, Southlake  
 Baldwin, Larry & Jan, Hibbing \*  
 Blasing, Mary Lou, The Villages  
 Braaten, Bruce & Paula, Minnesota City  
 Brown, Tom & Pam, San Luis Obispo\*  
 Burn, Terry & Kara, Moose Lake  
 Burnside, Aaron & Emily, Duluth<  
 Coffin, Stacy & Shelley Breyen, Duluth  
 Davidson, Deron & Sheila, Virginia<  
 Eggert, Keith & Cynthia, Bovey<  
 Etter, Hugh & Robin, Eveleth<  
 Falk, Mary & Bruce, Salol  
 Fisher, Jim & Nancy, Zim<  
 Garbisch, Bruce & Lois, Cook  
 Hakala, Jeff & Janet, Esko<  
 Hammar, Rev, Paul & Carolyn, Side Lake<  
 Hanka, Dale & Carolyn, Cohasset  
 Hill, Christopher & Angela Hill, Lees Summit\*  
 Holter, Richard, Cohasset  
 Hotchkiss, Matt & Amy, Chanhassen  
 Hurst, Steve, Ventura  
 Jackson, Scott & Paula, Hibbing  
 Johnson, Kent & Brigit, Bloomington  
 Jordan, Amy  
 Jordan, Daniel & Julie, Hibbing<  
 Keller, Stanley & Vi Ann, New Brighton  
 LeBeque, Nathan & Jackie, Virginia<  
 Leonidas, Terry & Jodi, Duluth<  
 Liesmaki, Chris & Terry, Hibbing  
 Lindberg, William, Edina  
 Lindstrom, Don & Becky, Babbit  
 Ludlow, Mark & Sally, Cook  
 Maki, Richard, Sun City West\*  
 Mattson, Karen, Duluth <  
 Mayfield, Shawn & Sara, Lakeville  
 Moore, Jan, Aurora\*  
 Mork, Andy & Beth, St. Paul  
 Murray, Robert & Barb, Mt. Iron<  
 Murray, Ross & Richard Garnett, New York  
 Negley, Don & Leanne, Babbit  
 Olijnek, Jim & Gail, Grand Rapids  
 Paulu, Arylene, Shoreview  
 Pearson, David & Elaine, Aitkin  
 Peterson, Myrna, Grand Rapids

Robson, Joanne, Duluth  
 Rudberg, Jon and Sue, Hibbing<  
 Rusch, Ryland, Davisburg  
 Sanders, Rev. Ray, Minneapolis  
 Schade, Jim+  
 Schneeweis, James & Nyla, Grand Rapids  
 Stiles, Tom & Sarah, St. Louis Park  
 Storlie, Jesse & Angie, Big Fork  
 Sundell, Jeffrey & Bridget, Ely  
 Swenson, Sue, Dana Point<+  
 Tibbetts, Bill & Brenda, Cook  
 Torgerson, Karolyn, Hibbing  
 Trebs, Bill & Denyse, Big Fork  
 Troutwine, Matthew, Gilbert+  
 Troutwine, Phil & Mary, Gilbert  
 Weber, Dane & Cathi, Cook  
 Wickland, David & Faith (Johnson), St. Peter  
 Widen, Doug & Elise, Deer River  
 Widmark, Stuart, Gilberts  
 Young, Dave & Lois, Grand Rapids

### **Trailblazer Level: \$500 - \$999**

Bachman, Gretchen, St. Peter\*  
 Bauman, Bill & Jeannie, Virginia  
 Betters, Jeffrey & Tammy, Hibbing<  
 Briggs, Mike, Aitkin  
 Burnside, Tom & Kathy, Bloomington  
 Buus, Terry, Duluth  
 Churchill, Gene & Sandy, Chisholm  
 Davidson-Teff, Samuel & Hannah  
 Dorn, Elizabeth, Grand Rapids<  
 Erickson, Ellen, Forest Lake  
 Frisk, James & Julie, Fargo  
 Godfrey, George & Donna, Forbes  
 Gueltzow, Louie & Janeen, Grand Rapids  
 Hilfer, Rany & Robin, I'Falls  
 Hofeldt, Dave & Laurel, Oakdale  
 Jacobson, Don & Mary Kay, Coleraine  
 Johnson, Dale, Cook\*  
 Jordan, Michael, Yankton  
 Klapatch, Mike & Jill, Chisholm  
 Lindberg, Steve & Reany, Cook  
 Lord, Sandy, Bottineau  
 Lundquist, Rick & Patty, Duluth  
 Marsh, Richard & Lynn, Minong  
 Matschiner, Dawn, Virginia  
 Matson, Keith & Jan, Riverton  
 Nielsen, Michael & Darlene, Deer River  
 Pedersen, Rev, Darrell & Jennifer, Aitkin

Richter, Doug & Sarah, Falcon Heights  
 Ringdal, Tom & Diane, Crystal  
 Roggow, Albert,  
 Rossi, Scott, Bakersfield+  
 Rude, Lois, Parker  
 Rueb, Jeffrey & Danica, Woodbury  
 Szamatula, Rick & Sharon, Duluth\*  
 Trullinger, John & Tina, Hibbing  
 Tryggstad, David & Lynn, Duluth\*  
 Waters, Ed & Mary Jean, Chisolm  
 Wickman, Bob & Ginny, Grand Rapids  
 Wittmers, Ruth, Duluth  
 Yarger, Rev. Lee & Jan, Plymouth

### **Pioneer Level: \$250 - \$499**

Allen, Lois, Deer River\*  
 Anderson, Eric & Heather, Edina  
 Baily, Jim & Judy, Duluth  
 Bakken, Jon & Mary, Waterville  
 Blenkush, Stephen & Julia, Pequot Lakes  
 Bloomquist, Bennet & Joyce,  
 Bockbrader, Rev. Rollie & Tracy, Esko  
 Clark, Joyce, Fargo  
 Collins, John & Eleanor, Duluth  
 Conger, Bill & Baily, Cook  
 Elkin, Erik & Peggy, New Port  
 Erickson, Richard & Joyce, Deer River  
 Freehauf, Douglas & Dorthy, Boilingbrook  
 Friest, Rev, Jerry & Sue, Eagan  
 Hadland, Rev. Paul Shakopee  
 Haffield, Sue Singleton, Two Harbors  
 Haslerud, Charles, Duluth  
 Holleque, Rich & Jessica, Minneapolis  
 Holmgren, Gordon & Donna, Emily  
 Hurst, Jacque, Minot\*  
 Jagim, Ryan & Julie, Duluth  
 Johnson, Donald & Laviere, Duluth  
 Johnson, Wallace & Julie, Two Harbors  
 Krjewski, Mike & Katya Ouchakof,  
 Fitchberg  
 Kuznia, Darin, Las Vegas  
 LeBoutillier, Steven, Westbrook  
 Makki, Bill & Debbie, Aurora  
 Malecha, Zack & Ellie, Niswaw  
 Nesbitt, Floyd, Greensboro  
 Olson, Kevin & Sandy, Hibbing  
 Pearson, Elizabeth, Edina

Raymond, Nancy, Grand Rapids  
Reich, Jeff & Susan, Altamonte Springs  
Ronning, Paul & Kara, Hibbing  
Routt, Doug, Amherst  
Sager, Nathan & Rita Rae, Duluth<  
Saksa, Eric & Tammy, Duluth  
Schock, Oscar & Susan, Hibbing<  
Schumacher, Dianna, Cohasset

**Builder Level: \$249-\$100**

Abenth, Stephen & Jill, St. Paul  
Ahlberg, Ken & Michelle, Hermantown  
Almquist, Robert, Duluth  
Anderson, Bjorn & Laura, Cook  
Anderson, Catherine, Duluth  
Anderson, David & Gayle, Cohasset<  
Anderson, Edward & Judy, Aitkin  
Anderson, Paul & Carol, Duluth  
Anderson, Stephanie & Josiah Telschow, Coon Rapids  
Aune, Richard & Sue, Cook  
Badger, Dan & Jane Olson, Duluth  
Barnes, Rev. Charles & Nancy, Embarrass  
Bartz, Don & Bonnie, Deer River  
Benecke, Peter & Bethany, Golden Valley  
Berry, Rev. Andy & Rachel Berry, Little Fork  
Bigler, Jeffrey & Marnie, Rochester  
Bogren, Kathy, Virginia  
Booth, Richard & Linda, Grand Rapids  
Braaten, David, Butte  
Bredeson, John & Beryl, Duluth  
Breitenfeldt, Paul & Laurie, Mosinee  
Bristow, Jack & Janice, Sioux City  
Caarlson, Gary & Patty, Cook  
Cannon, Neal & Mary Bloomington  
Carlson, Allana, Proctor+  
Chase, Rodger & Carol, Grand Rapids  
Churchill, Raleigh, Rockland  
Cochran, Kris, Virginia+  
Cole, Mary, Pequot Lakes+  
Cook, Tim, Roseville  
Coyer, Matin, Grand Rapids  
Culbert, Bill & Chris, Virginia  
Dewitte, Jesse & Renee, Duluth  
Eckman, Matthew & Kay, Duluth  
Eldredge, Rev. Chris & Rev. Nancy Eldrege Hess, Fergus Falls  
Eliefson, Nancy, Proctor  
Elofson, John & Diane, Virginia  
Erno, Christa, Blaine+  
Erickson, James & Carole Paulson,

East Gull Lake  
Erickson, Solveig, Plymouth+  
Erven, Beverlee, Grand Rapids  
Filkins, Drew, Lansing+  
Fraundorf, Anita, Duluth  
Fuchs, Steven & Patricia, Edin Prairie  
Gabler, Jack, Richmond  
Garrison, Brianna, Park Falls  
Georgius, Lynn, Port St. Lucie+  
Geving, Keith, Eagan  
Gilber, Kristin, Minneapolis  
Gilbertson, Allen & Karen, Grand Rapids  
Gilbertson, George & Lou Ellen, Grand Rapids  
Gjessing, Morris, Moose Lake  
Glass, Jesse & April, Cook  
Gold, Morris, Wyoming  
Graul, Robert & Jean, Cohasset  
Gravlin, John and Marian, Ofallon  
Grosland, Thomas & Eileen, La Prairie  
Hagman, Dave & Sally, Grand Rapids  
Hansen, Dave, Virginia+  
Heald, Cleone, Hibbing  
Hensel, John & Joy, Duluth  
Hill, Jan, Deer River+  
Hollett, Jason & Karisa, Minneapolis  
Holm, Shane & Sue, Deer River  
Hommes, David & Linda, Aitkin  
Hoplin, Cleone, Pine River\*  
Houck, Leon & Deborah, Wright  
Hoyer, Marc & Mia, Westminster  
Hoyum, Loren & Edith, Bemidji  
Hunsaid, Anna Mae, Minot  
Jackson, Allen & Carmen Jackson, Grand Rapids  
Jarvi, Raelene, Cohasset  
Jenkins, Brian & Dawn, Grand Rapids  
Jenkins, Gene & Marilyn, Cook  
Johnson, Norma, Duluth  
Kaiser, Dale, Grand Rapids<+  
Karich, Pam, Hibbing  
Kellerman, Paul & Lynne, Aitkin  
Kelley, Robert, Duluth  
Keppers, Jody & Bonnie, Duluth  
Stanley, Kitter, Grand Rapids  
Klemetsrud, Bethany, East Grand Forks  
Klinefelter, Corey & Kristin, Cohasset  
Kooda, Dave & Kathy, Grand Rapids  
Korsmon, George & Ruth, Moorhead  
Kovacs, John & Pam, Minneapolis  
Krause, Victor & Terri, Duluth

Krueger, Wayne & Rev. Vicki Taylor  
Lakso, Peggy, Two Harbors  
Larson, Brenda Grand Rapids+  
Lervik, Genevieve, Hibbing  
Leslie, Micah, Bent  
Leslie, Rev. Paul & Karen  
Lind, Art & Kathy, Hibbing  
Lindgren, Lois, Bloomfield Hills  
Loberg, Gary & Nancy, Hermantown  
Lorenze, Dave & Vicky, Grand Rapids  
Lothner, David & Marcia, Duluth  
Lundberg, Rich & Sharon, North Branch  
Magner, Mike & Diana, Grand Rapids  
Manatad, Peggy, Puyallup+  
Martin, Jane, Duluth  
Martin, Philip & Jessica, Aitkin  
Martinetto, Jim & Cheryl, Grand Rapids  
Marty, Martin, St. Paul+  
Matheson, Myrna, Duluth  
Miller, Jane, Duluth  
Minske, Dorthy, Pengily  
Mobilia, Daniel & Faye, Tower  
Moehrle, Steve, Minneapolis  
Mogen, Joe & Lily, Moose Lake  
Monson, Mark & Grace, Duluth  
Morroff, Andrew & Gwen, Duluth  
Munson, Rev. Roger & Helen, Duluth  
Nelson, Bob & Judy, Aitkin  
Nelson, Thomas, Grand Rapids+  
Nichols, Sara, Hermantown  
Norman, Kim & Joy, Aurora  
O'Melia, David & Jeanne, Ohio  
Ogg, Dan & Ann, Hibbing  
Olson, Mike & Courtney, Big Fork\*  
Olson, Russ & Karen, Hoyt Lakes  
Oswold, Jane, Scanlon  
Packer, Arvin & Mary, Park Rapids  
Parker, Jack & Linda, Minneapolis  
Paulson, David & Suku, Aitkin  
Pedersen, Royanne, Duluth

**Symbol Key:**

\*Endowment Fund  
< Debt Reduction  
+ New Builder

## Organizational Gifts and Other Contributions

38ers Snowmobile Club	First Lutheran Church	Our Savior's Lutheran Church
Arsher Charitable Trust	First Lutheran Church	Our Savior's Lutheran Church
Baptism River Community Church	First Lutheran Church	Our Savior's Lutheran Church
Bear River Lutheran Church	First Lutheran Church	Rose Family
Bethany Lutheran Church	French River Lutheran Church	Salem Lutheran Church
Bethany Lutheran Church	Frost River	Salem Lutheran Church
Bethany Lutheran Church	Gethsemane Lutheran Church	Spirit of God Lutheran Church
Bethel Lutheran Church (Warba)	Gloria Dei Lutheran Church	St Andrew's Lutheran Church
Bethel-Trinity Lutheran Church	Good Shepherd Lutheran Church	St John's Lutheran Church
Bethesda Lutheran Church	Grace Community Church	St John's Lutheran Church
Bethlehem Lutheran Church	Grace Lutheran Church	St Mark's Lutheran Church
Bethlehem Lutheran Church	Grace Lutheran Church	St Paul's Lutheran Church
Brown & Brown of Garden City Inc	Holy Trinity Lutheran Church	St Paul's Lutheran Church
Calvary Lutheran Church	Immanuel Lutheran Church	Sundell Eye Associates
Carmel Lutheran Church	Kenwood Lutheran Church	The Russell Avikaninen Memorial Endowment
Concordia Lutheran Church	Leitch Charitable Fund	Trinity Lutheran Church
Cook Building Center	Liesmaki Family Charitable Fund	Trinity Lutheran Church
Eco Faith Network of the NE MN Synod	Littlefork Lutheran Church	Trinity Lutheran Church
Effie Fredheim Lutheran Church	LP Corp	United In Christ Lutheran Church
Emmanuel Lutheran Church	Lutheran Church of the Good Shepherd	United Lutheran Church
Evangelical Lutheran Church	Men's Breakfast at Hiawatha	Vermilion Lake Association
Faith Lutheran Church	Messiah Lutheran Church	WA Fisher Company
Faith Lutheran Church	Nashwauk Lutheran Church	Zion Lutheran
Faith United Lutheran Church	Our Savior's Lutheran Church	Zion Lutheran Church
Family Of God Lutheran Church	Our Savior's Lutheran Church	Zion Lutheran Church
First Evangelical Lutheran Church	Our Savior's Lutheran Church	Zion Lutheran Church
First Lutheran Church	Our Savior's Lutheran Church	

## Founding Family Gifts

In the late 1950's, families from all over Northeastern Minnesota came together to start Camp Hiawatha and Camp Vermilion. Their commitment and dedication to a formative Bible Camp experience laid the foundation for the ministry that we have today. Founding family gifts are \$10,000 and over made to the Annual Fund. They reflect the passion of our original Founding Families.

### *We gratefully acknowledge the following Founding Families:*

Anonymous (4 families)  
Arsher Charitable Trust  
Larry & Jan Baldwin  
Liesmaki Family Charitable Fund  
Stanley & Vi Ann Keller  
Ahol Foundation  
Dan and Julie Jordan  
Mary Lou Blasing  
Don and Leanne Negley

### **Women of the ELCA gifts:**

Women of the ELCA, NE MN SYOD  
Women of the ELCA, Trinity Lutheran  
Women of the ELCA, Zion Lutheran  
Women of the ELCA, Zion Lutheran  
Women of the ELCA, First Lutheran

Women of the ELCA, Bethel-Trinity Lutheran  
Women of the ELCA, Evangelical Lutheran  
Women of the ELCA, Faith Lutheran  
Women of the ELCA, First Lutheran  
Women of the ELCA, Fredheim Lutheran

## 2023 Honorariums

### In Honor of:

Barb & Bob Murray

Barb Etter & Doug and Nancy McCLEllan

Bjornstjerne Anderson

Don & Mary Kay Jacobson

Freddie Ray & Megan Liesmaki

Gordon & Arylene Paulu

Irene Skoglund

James and Karen Gerth

Jerry Tinquist

Joel Abenth

John Boecker

Karen Mattson

Karolyn Torgerson

Kate, Andy Rudberg Kristy and Laura Rudberg-Post

Katie Maurer

Katie Maurer, Bjorn Anderson, Jamie Szamatula

Leah Martin

Megan Liesmaki

Paul Collins

### Given By:

Hensel, Joy & John

Ahola, Twilla

Magnuson, Kathy

Manatad, Peggy

Rioux, Eileen

Suomala, Richard

Holleque, Rich & Jessica

Anderson, Laura

Tryggestad, David & Lynn

Witty, Thomas & Jacquelin

Allen, Lois

Erdman, Daryl & Audrey

Erickson, Solveig

Gilbertson, Allen & Karen

Liesmaki, Chris & Terry

Paulu, Eric

Fuchs, Steven & Patricia

Oak Lake

Wicklund, David & Faith (Johnson)

Garbisch, Bruce & Lois

Hill, Christopher & Angela

Leslie, Rev. Paul & Karen

Maki, Richard

Moore, Jan

Tibbitts, Bill & Brenda

Tryggestad, David & Lynn

Gretchen Bachman

Deborah Boecker

Mayfield, Shawn & Sara

Krajewski, Mike & Katya Ouchakof

Rudberg, Jon & Sue

Schumacher, Dianna

Szamatula, Rick & Sharon

Martin, Jane

Bettters, Jeffrey & Tammy

Collins, John & Eleanor

## 2023 Memorials

*Several other gifts were received anonymously in quiet memory of a loved one.  
VLM is honored to be a part of all of their legacies.*

### **In Memory of:**

Alice Powell  
Angel Cook  
Art Churro  
Ben Erlin Brenfeldt  
Bob Buchanan  
Carol Kelley  
Charliene Johnson  
Christopher Yarger  
Dennis Clark  
Don Hagestuen  
Eric Hurst  
Gerald VanDervort  
Greg Hagy  
Helen & Lloyd Lindberg  
Herman Blasing  
Jim & Mary Bakke  
Joshua Nelson  
Judy Barrick  
Julia Johnson  
Julie Fogelberg  
Larry Ladd  
Laurance Kleven  
Libby Hill  
  
Lynn Cloran  
Mark Johnson  
  
Mary Bakke  
Mel & Audrey Bakk  
Pat Emberg  
Pat Geiselman  
Ralph Skoglund  
Ruth Rietan  
Sharon Anderson  
Susan Frouse  
Terry Hite  
The Yarger Family  
Tim Salisbury  
Vicki Esterby

### **Given By:**

Nielsen, Michael & Darlene  
Peterson, Elizabeth  
Moore, Jan  
Breitenfeldt, Paul & Laurie  
Severson, Kathie  
Kelley Robert  
Heald, Cleone  
Yarger, Rev. Lee & Jan  
Clark, Joyce  
Pearson, David & Elain  
Hunsaid, Anna Mae  
VanDervort, Diane  
Nielsen, Michael & Darlene  
Avery, Sean & Erin  
Blasing, Mary Lou  
Szamatula, Rick & Sharon  
Nielsen, Michael & Darlene  
Nielsen, Michael & Darlene  
Johnson, Norma  
Floyd, Justin & Shannon  
Hurst, Jacque  
Bigler, Jeffrey & Marian  
Rogan, Alex  
Gravlin, John & Marian  
Hurst, Jacque  
Chase, Rodger & Carol  
Jackson, Allen & Carmen  
Nestingen, Leslee  
Szamatula, Rick & Sharon  
Nesbitt, Floyd  
Eilefson, Nancy  
Geiselman, Cindy  
Fuchs, Steven & Patricia  
Moore, Jan  
Moore, Jan  
Heald, Cleone  
Hagestuen, Lyndon & Ann  
Priess, Mark  
Nielsen, Michael & Darlene  
Singleton Haffield, Sue

## 2023 Congregational Stats

City, Congregation		Conf.	Per Confirmed Member				Special Gift		Women-ELCA		Campers		BWCAW		Retreat		Building
		2023	2023 goal	2023	2022	2023	2022	2023	2022	2023	2022	2023	2022	2023	2022	sponsorship	
Aitkin	First	843	2529.00	2959.00	4996.00	0.00	383.00	0.00	0.00	11	10	0	0	0	0	CH-Lindberg	
Aitkin	St John's	129	287.00	287.04	0.00	0.00	0.00	0.00	0.00	0	0	0	0	0	0	None	
Aurora	Our Savior's	215	645.00	648.00	648.00	0.00	0.00	0.00	0.00	5	4	0	0	0	0	CV-Sandpoint	
Babbitt	Evangelical	168	504.00	458.15	416.50	0.00	0.00	100.00	150.00	4	6	0	0	0	0	CV-Nature Center	
Barnum	Elim	215	645.00	0.00	0.00	0.00	0.00	0.00	0.00	0	0	0	0	0	0	none	
Bear River	Bear River	45	135.00	135.00	0.00	0.00	0.00	0.00	0.00	0	0	0	0	0	0	none	
Bigfork	Grace Comm.	144	432.00	200.00	246.00	0.00	0.00	0.00	0.00	1	1	0	0	0	0	CV-Lac La Croix	
Bovey	Bethel-Trinity	82	246.00	550.00	500.00	0.00	0.00	200.00	200.00	0	1	0	0	0	0	none	
Brainerd	First	535	1605.00	1605.00	1554.50	0.00	0.00	0.00	0.00	0	12	0	0	0	0	none	
Buhl	First	59	177.00	0.00	0.00	0.00	0.00	0.00	0.00	0	0	0	0	0	0	none	
Carlton	Bethesda	215	645.00	645.00	675.00	0.00	0.00	0.00	0.00	2	1	0	0	0	0	none	
Chisholm	Faith	126	378.00	300.00	405.00	0.00	0.00	150.00	300.00	0	0	0	0	0	0	none	
Cloquet	Our Savior's	603	1809.00	0.00	1245.63	886.00	0.00	0.00	0.00	10	9	0	0	11	0	CV-Birch	
Cloquet	Zion	540	1620.00	1215.00	0.00	0.00	0.00	0.00	0.00	4	6	0	0	0	0	none	
Cook	Trinity	297	981.00	942.00	972.00	0.00	0.00	500.00	0.00	11	9	0	0	0	0	CV-Chapel	
Cronwell	Bethany	206	600.00	600.00	0.00	0.00	0.00	0.00	0.00	3	0	0	0	0	0	CV-Alneau	
Culver	Faith	91	273.00	0.00	0.00	0.00	0.00	0.00	0.00	0	0	0	0	0	0	none	
Deer River	Bethany	199	597.00	597.00	512.90	0.00	0.00	0.00	0.00	2	2	0	0	0	0	CH-Sauna	
Deer River	Clara	11	33.00	0.00	0.00	0.00	0.00	0.00	0.00	0	0	0	0	0	0	none	
Deer River	Suomi	29	87.00	0.00	0.00	0.00	0.00	0.00	0.00	0	0	0	0	0	0	none	
Deerwood	Salem	401	1203.00	958.29	2730.23	0.00	210.00	0.00	0.00	2	2	0	0	0	0	none	
Duluth	Concordia	419	1257.00	0.00	0.00	245.00	380.00	0.00	0.00	2	0	0	0	0	0	CV-Trail Shack	
Duluth	Elim	451	1353.00	0.00	0.00	0.00	0.00	0.00	0.00	3	5	0	0	0	0	CV-Delhut	
Duluth	Family Of God	420	1260.00	1466.63	1333.30	0.00	0.00	0.00	0.00	0	1	0	0	0	0	none	
Duluth	First	1147	3441.00	2628.00	3212.00	0.00	0.00	0.00	0.00	3	2	0	0	0	0	CV-Boathouse	
Duluth	Gloria Dei	299	897.00	897.00	909.00	0.00	0.00	0.00	0.00	7	2	0	0	0	0	none	
Duluth	Good Shepherd	1081	3243.00	3243.00	0.00	5000.00	12000.00	0.00	0.00	6	6	0	0	0	9	CV-Bathhouse	
Duluth	Kenwood	190	570.00	792.00	0.00	0.00	0.00	0.00	0.00	5	3	0	0	0	0	CV-Joilet	
Duluth	Our Savior's	262	786.00	909.00	909.00	0.00	129.33	0.00	0.00	3	4	0	0	0	0	CV-Aspen	
Duluth	Spirit of God	120	630.00	200.00	200.00	0.00	0.00	0.00	0.00	0	0	0	0	0	0	CV-Wakemup	
Duluth	Trinity	391	1173.00	326.90	853.37	0.00	300.00	0.00	0.00	0	2	0	0	0	0	CV-Knife Lake	
Edina	Normandale	1834	5502.00	0.00	3000.00	0.00	0.00	0.00	0.00	36	28	0	8	0	44	none	
Effie	Effie Fredheim	67	201.00	500.00	0.00	0.00	0.00	100.00	0.00	0	0	0	0	0	0	none	
Ely	Grace	375	1125.00	1800.00	1650.00	0.00	0.00	0.00	0.00	6	2	0	0	0	0	CV-Rainy Lake	
Embarrass	Hope	178	534.00	0.00	0.00	0.00	0.00	0.00	0.00	0	0	0	0	0	0	CV-Sauna	
Eveleth	United In Christ	524	1572.00	1572.00	1575.00	0.00	175.00	0.00	0.00	2	1	0	0	0	0	CV-Waterfront	
Finland	Baptism River	64	192.00	325.00	192.00	0.00	0.00	0.00	0.00	0	0	0	0	0	0	CV-Schoolcraft	
Floodwood	Hope	70	210.00	0.00	0.00	0.00	0.00	0.00	0.00	0	0	0	0	0	0	CV-Baraga	
Grand Rapids	St Andrew's	623	1869.00	3250.00	2619.00	0.00	381.00	0.00	0.00	28	10	0	0	0	14	CH-Retreat Center	
Grand Rapids	Zion	814	2442.00	0.00	1000.00	0.00	0.00	300.00	300.00	22	20	0	0	0	0	CH-Chapel/Dining	
Hackensack	St Paul's	99	297.00	250.00	0.00	0.00	250.00	0.00	0.00	0	0	0	0	0	0	none	
Hermantown	Grace	585	1755.00	1962.50	1758.75	0.00	0.00	0.00	0.00	0	7	0	0	0	0	CV-Logo	
Hermantown	Salem	433	1299.00	1299.00	1299.00	0.00	0.00	0.00	0.00	2	5	0	0	10	0	none	
Hibbing	First	380	1140.00	1140.75	2086.50	5000.00	0.00	250.00	250.00	10	4	0	0	0	15	CH-Log Lodge	
Hibbing	Our Savior's	860	2580.00	2600.00	2600.00	2400.00	14385.00	0.00	0.00	13	16	6	8	0	0	CV-Bakk House	
Hovland	Trinity	87	261.00	200.00	261.00	200.00	375.00	0.00	0.00	0	0	0	0	0	0	CV-Hopkins	
Hoyt Lakes	Faith	257	771.00	0.00	716.00	0.00	0.00	0.00	0.00	0	0	0	0	0	0	CV-Namakan	
Int'l Falls	First	350	1050.00	1050.00	1050.00	0.00	0.00	0.00	0.00	11	8	0	0	0	0	CH-Boys Cabins	
Int'l Falls	Zion	491	1073.00	600.00	1473.00	0.00	0.00	350.00	350.00	0	1	0	0	0	0	CV-Maple	
Iron	Faith United	267	801.00	1031.25	2208.25	2176.30	0.00	0.00	0.00	3	4	0	0	20	0	CV-Shlcrft/Mckz	

Jacobson	Carmel	75	225.00	0.00	250.00	0.00	0.00	0.00	0.00	0	0	0	0	0	0	none
Keewatin	Good Shepherd L	6	18.00	100.00	100.00	0.00	0.00	0.00	0.00	0	0	0	0	0	0	none
Knife River	Knife River	165	495.00	498.00	622.50	0.00	0.00	0.00	0.00	0	0	0	0	0	0	CV-Canteen
Littlefork	Littlefork	171	513.00	750.00	725.00	0.00	0.00	0.00	0.00	6	15	0	0	0	0	CV-Maple
Loman	Bethany	85	255.00	720.00	720.00	0.00	0.00	0.00	0.00	3	1	0	0	0	0	none
Lutsen	Lutsen	100	300.00	0.00	0.00	0.00	0.00	0.00	0.00	3	0	0	0	0	0	none
Mahtowa	Salem	158	474.00	0.00	0.00	0.00	0.00	0.00	0.00	0	0	0	0	0	0	none
Moose Lake	Hope	496	1488.00	0.00	2235.00	0.00	0.00	0.00	0.00	3	0	0	0	0	0	none
Mt Iron	Messiah	281	843.00	671.00	1235.00	140.50	0.00	0.00	750.00	3	15	0	0	0	0	CV-Sacagawea
Nashwauk	Nashwauk	139	417.00	1200.00	1100.00	0.00	0.00	0.00	0.00	0	0	0	0	0	0	none
Orr	Calvary	41	123.00	0.00	0.00	0.00	100.00	0.00	0.00	1	1	0	0	0	0	CV-Radisson
Outing	Our Savior's	140	420.00	500.00	1000.00	0.00	0.00	0.00	1000.00	0	0	0	0	0	0	none
Palo	St Mark's	254	762.00	642.00	644.00	0.00	0.00	100.00	100.00	1	0	0	0	0	0	CV-Basswood
Pine River	First	162	486.00	1100.00	1200.00	0.00	0.00	100.00	0.00	3	1	0	0	0	0	none
Proctor	United	225	675.00	1175.00	1100.00	0.00	0.00	0.00	0.00	9	3	0	0	0	0	CV-Priest House
Saginaw	St John's	46	138.00	138.00	100.00	100.00	0.00	0.00	138.00	0	1	0	0	0	0	CV-Bakk House
Soudan	St Paul's	81	243.00	243.00	156.00	0.00	0.00	0.00	0.00	0	0	0	0	0	0	none
Talmoon	Jesse	76	288.00	772.00	432.00	0.00	0.00	0.00	150.00	0	0	0	0	0	0	none
Tower	Immanuel	154	462.00	1000.00	1000.00	0.00	0.00	0.00	0.00	8	2	0	0	0	0	none
Two Harbors	Bethlehem	869	2607.00	500.00	1000.00	0.00	0.00	0.00	0.00	1	1	0	0	0	0	CV-Selkirk
Two Harbors	Emmanuel	595	1785.00	250.00	275.00	0.00	0.00	0.00	0.00	0	0	0	0	0	0	CV-Mackenzie
Two Harbors	OS Castle Danger	56	168.00	0.00	500.00	500.00	0.00	0.00	0.00	0	0	0	0	0	0	none
Virginia	Gethsemane	507	1521.00	2400.00	2800.00	20000.00	30000.00	0.00	0.00	2	2	0	0	0	12	CV-Thompson
Virginia	Our Savior's	540	1620.00	1976.19	2184.00	0.00	1500.00	0.00	0.00	1	2	0	0	0	0	CV-White Pine
Warba	Bethel	69	207.00	250.00	800.00	0.00	0.00	0.00	0.00	0	0	0	0	0	0	none
Wright	Bethlehem	29	87.00	200.00	200.00	0.00	0.00	0.00	0.00	1	4	0	0	0	0	CV-Marquette

Corporate/Synod totals		23811	71335.00	55227.70	61189.43	36647.80	60185.33	2150.00	3688.00	262	232	6	16	41	94	
Non-Member/Anonymous										255	199	115	66	3537	4075	
Overall Totals		23811	71335.00	51981.66	61189.43	36647.80	60185.33	2150.00	3688.00	517	431	121	82	3578	4169	

Discontinued membership in 2023, Bethel-Superior, Bethlehem- Grand Marais, Trinity- Long Lake, Holy Trinity- Hibbing





Thank you for celebrating the people and places of God's mission at VLM. For more detailed information on this past year, please check out the links below, or contact us at:



Camp Hiawatha • Camp Vermilion

1325 N. 45th Ave. E.  
Duluth, MN 55804

[vlm@vlmcamps.org](mailto:vlm@vlmcamps.org)  
218-481-9080



3944 Camp Hiawatha Road  
Deer River, MN 56636  
218-246-8604



2555 Vermilion Camp Road  
Cook, MN 55723  
218-666-5834



**Annual Meeting Web site**

Appendix, Delegate Packet, Budget,  
etc.